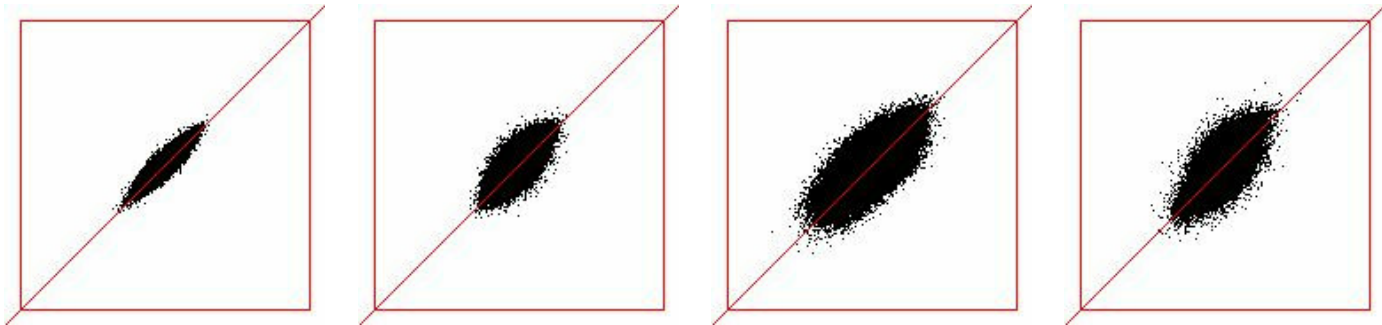


Fattore di Cresta del segnale musicale
Enrico Ruggeri : "Enrico VIII & Difesa Francese"

Enrico Ruggeri : "Enrico VIII & Difesa Francese" un CD ADD stampato in Germania nel 1987. Il Fattore di cresta raggiunge 19.61 in traccia 8 (valore alto in assoluto) con il minimo a 7.82 ma 9 tracce altre il 10. All'epoca non esistevano i lettori mp3 e non c'era quindi ragione per non realizzare una buona registrazione. Dovrebbe essere un esempio: made in Italy. Unico neo un certo offset presente in alcuni brani che "sporca" la parte infrasonica dello spettro (ma che non porta conseguenza all'ascolto in quanto determinato dal padding del segnale per eseguire la FFT).

Traccia	Max	CF	Slew rate
Ruggeri_01	13695	8.79	0.43
Ruggeri_02	13625	7.82	0.48 cf min
Ruggeri_03	22406	10.32	0.56
Ruggeri_04	18892	9.49	0.66
Ruggeri_05	20008	9.82	1.01
Ruggeri_06	32767	10.15	1.33
Ruggeri_07	23780	12.60	0.67
Ruggeri_08	30572	19.61	0.84 cf max
Ruggeri_09	25817	10.05	0.99
Ruggeri_10	18494	10.12	0.63
Ruggeri_11	17977	11.11	0.69
Ruggeri_12	25435	9.02	0.74
Ruggeri_13	25436	9.45	0.89
Ruggeri_14	19647	10.09	0.73
Ruggeri_15	23162	16.16	0.65

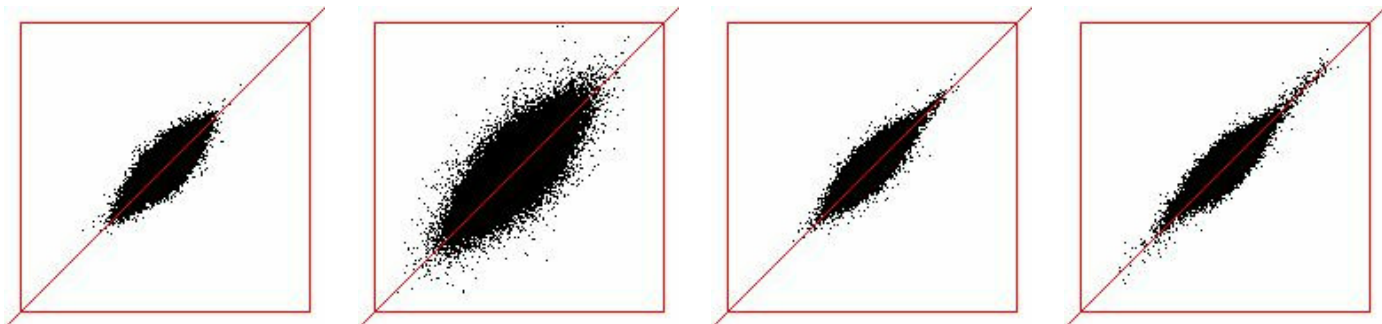


Traccia 1

Traccia 2

Traccia 3

Traccia 4

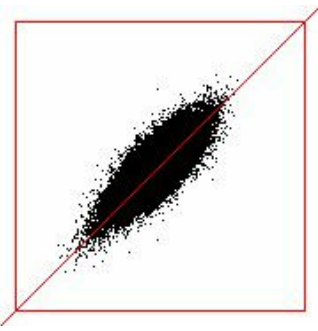


Traccia 5

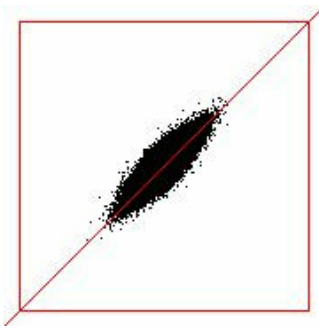
Traccia 6

Traccia 7

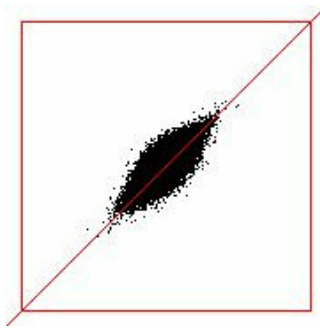
Traccia 8



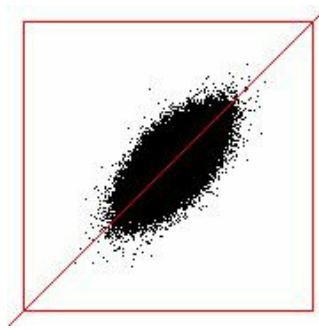
Traccia 9



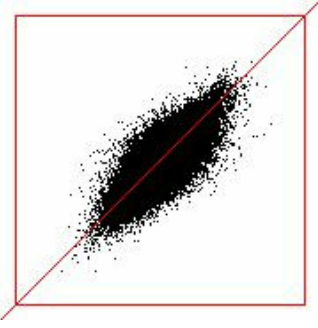
Traccia 10



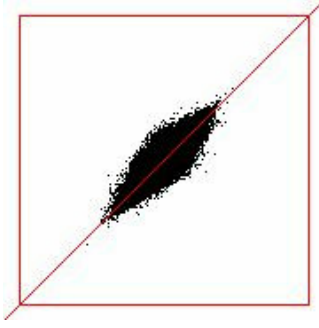
Traccia 11



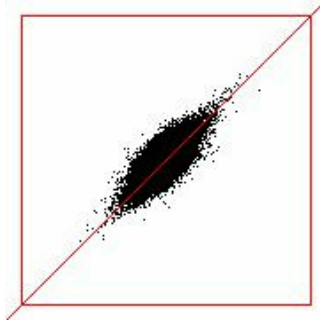
Traccia 12



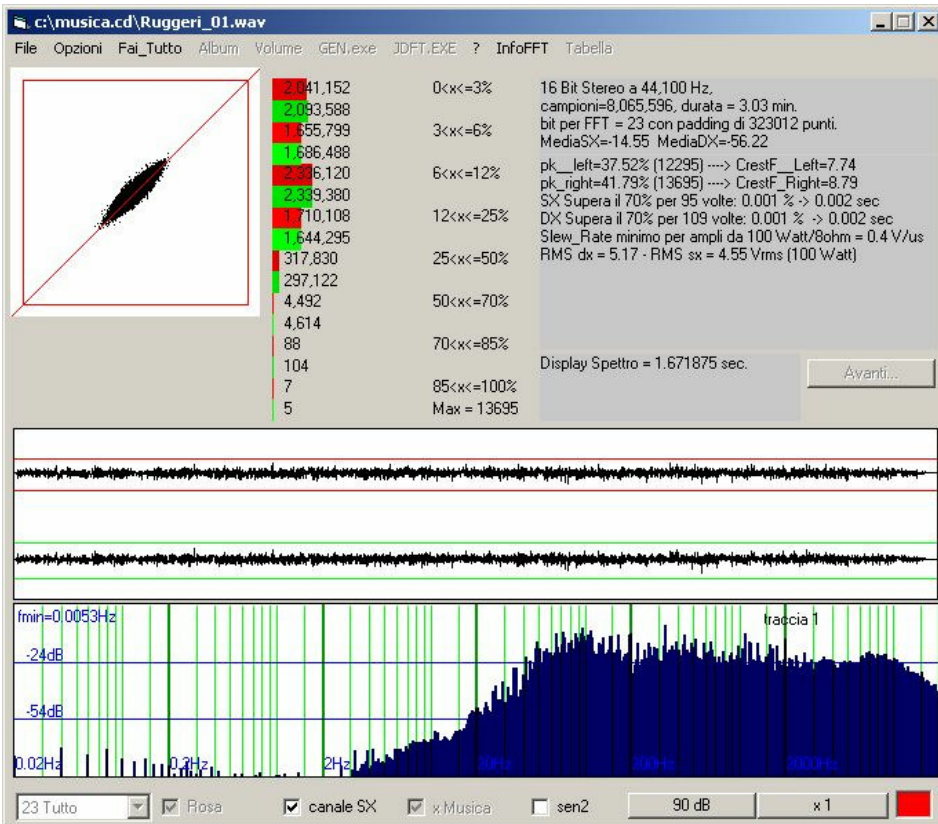
Traccia 13

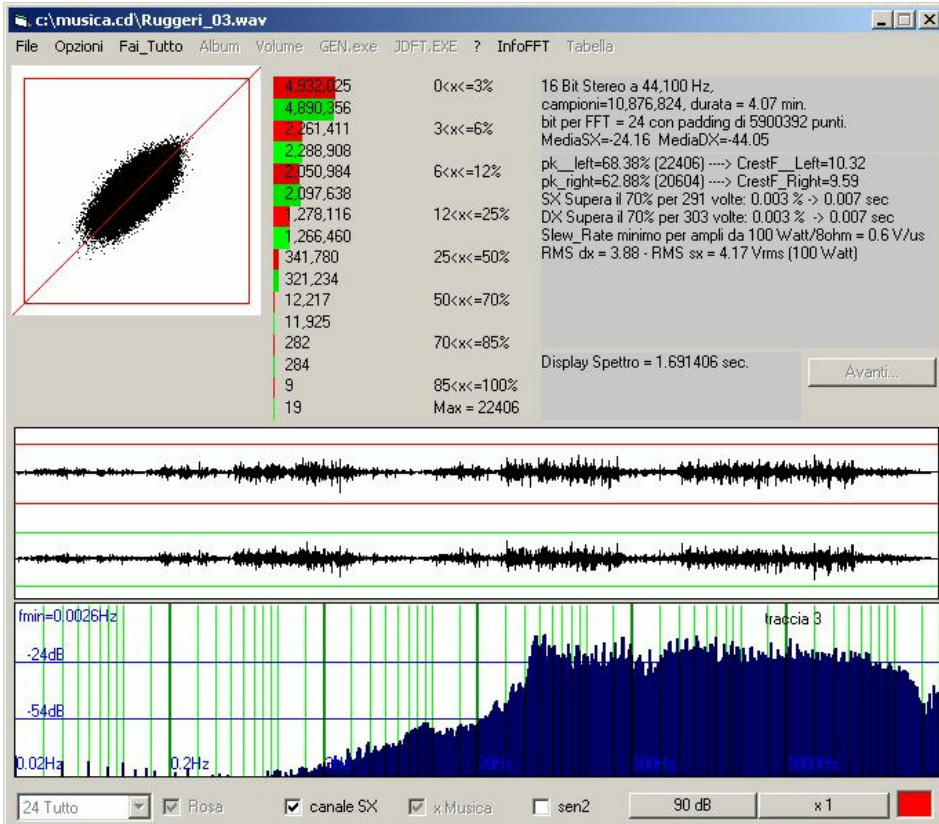
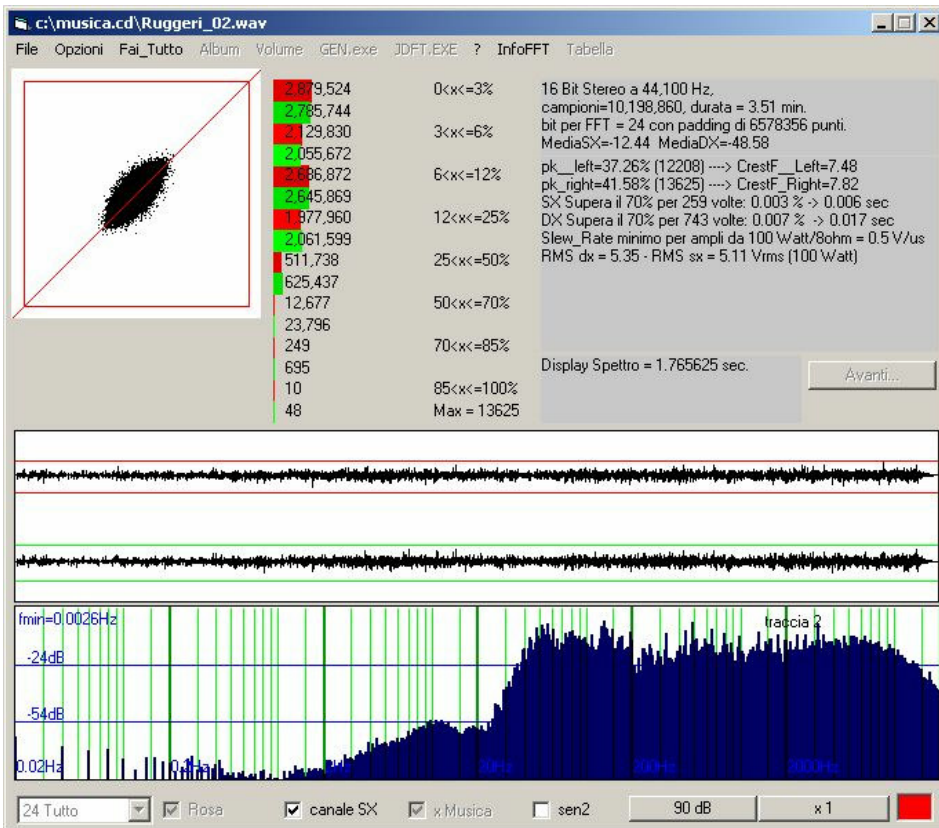


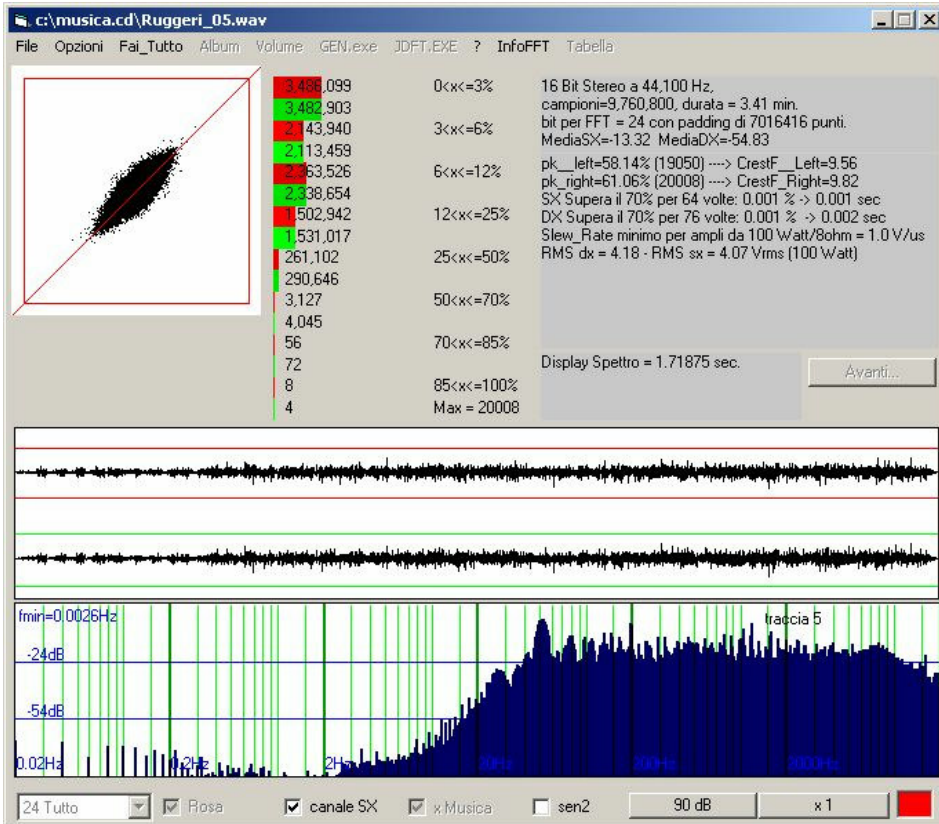
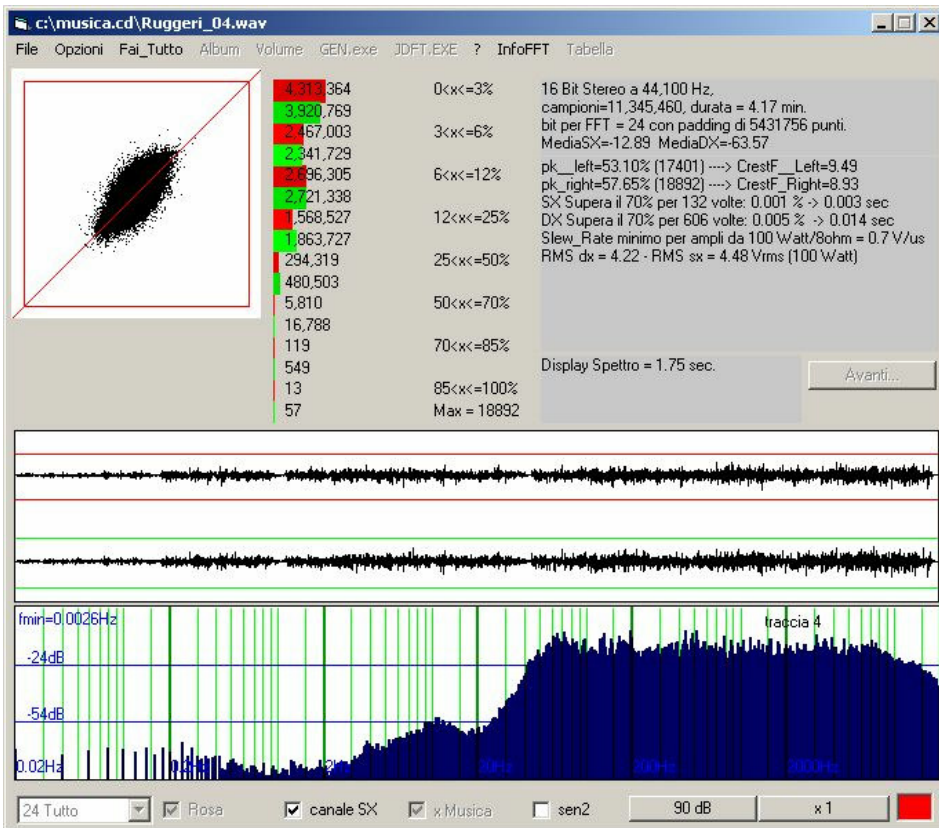
Traccia 14

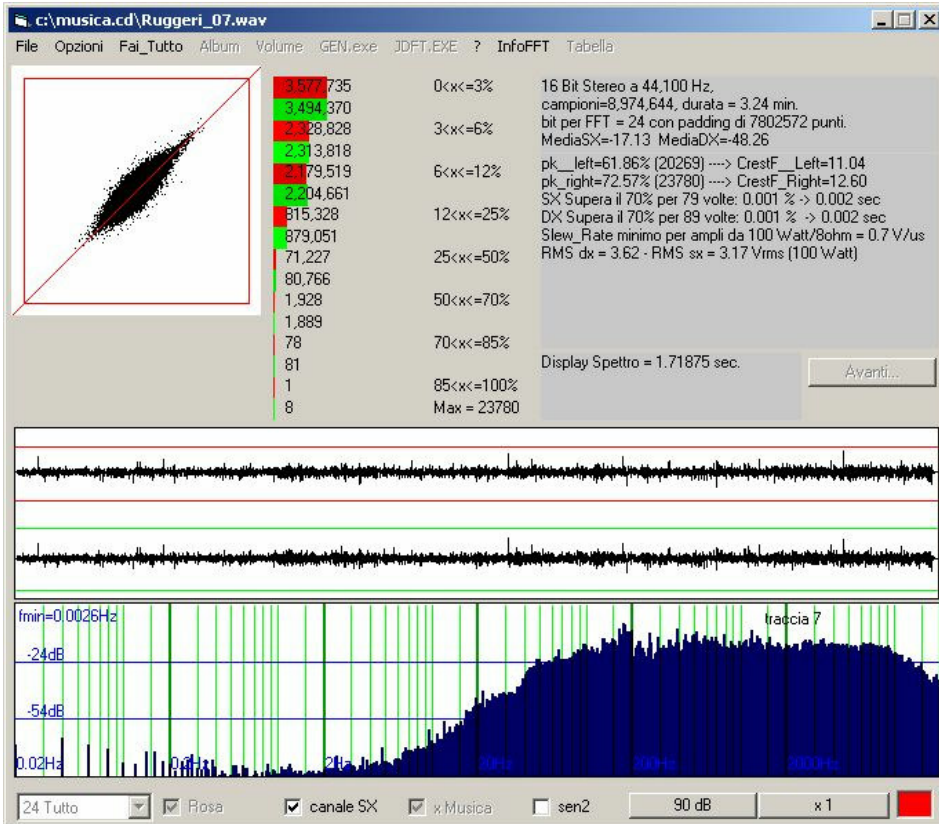
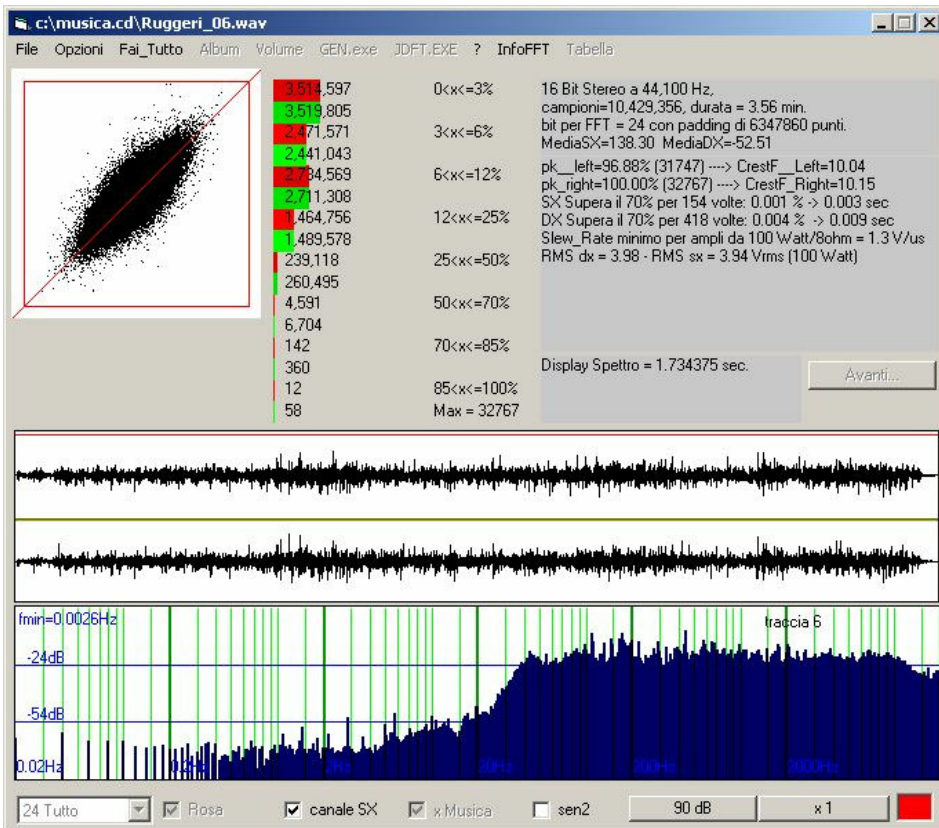


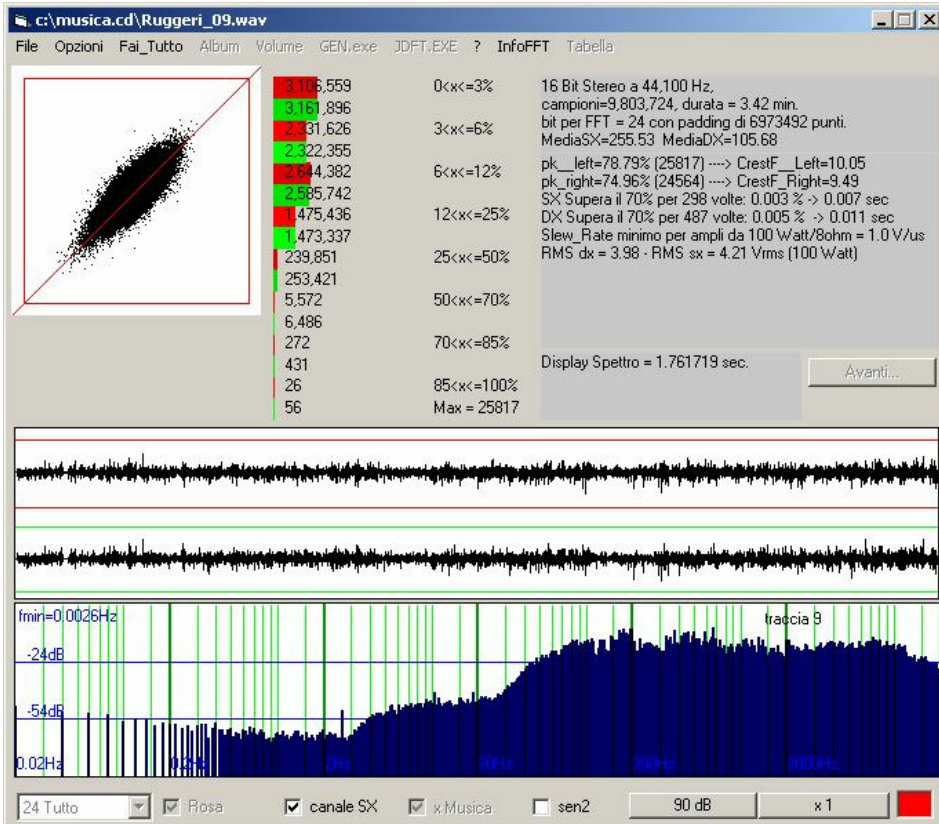
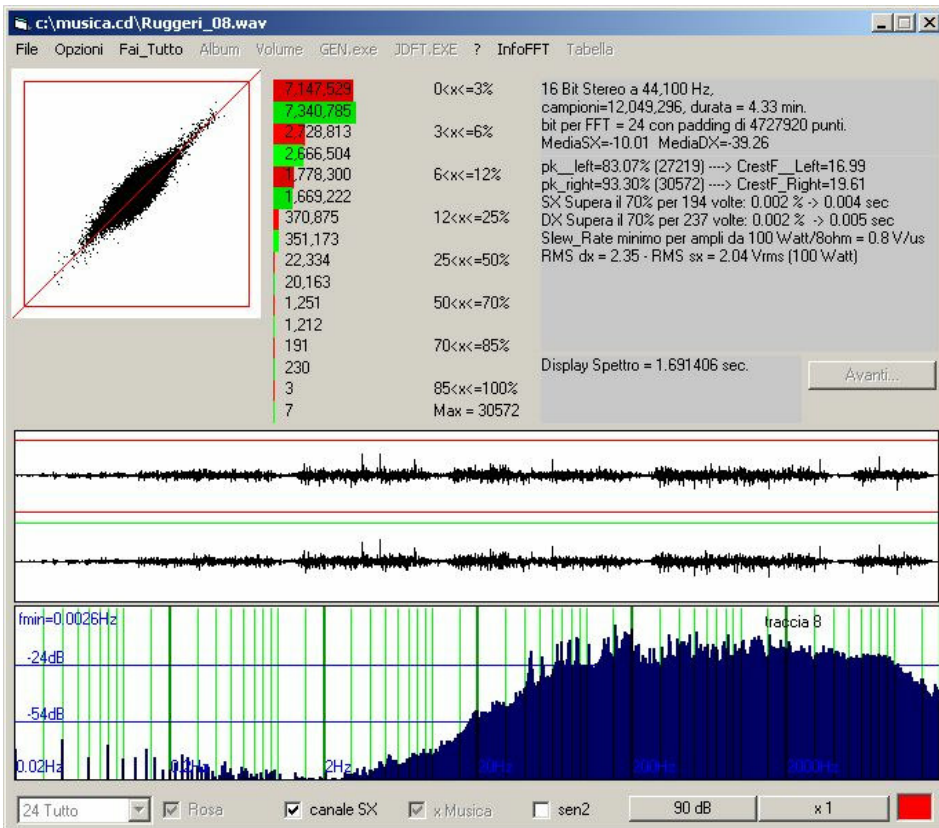
Traccia 15

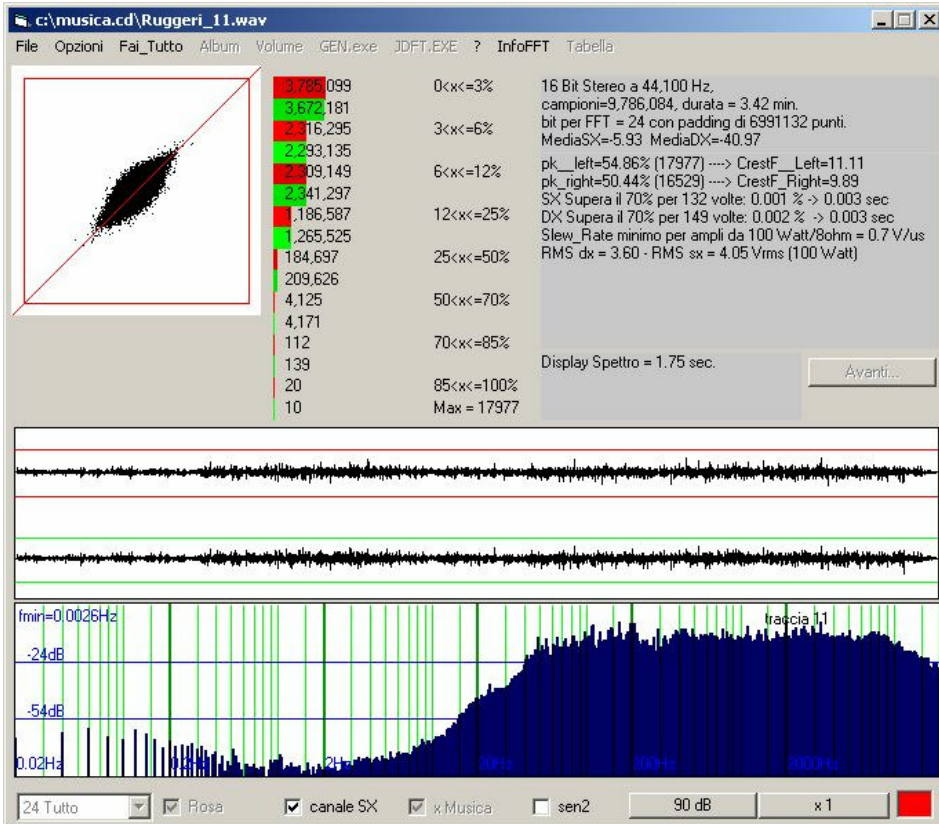
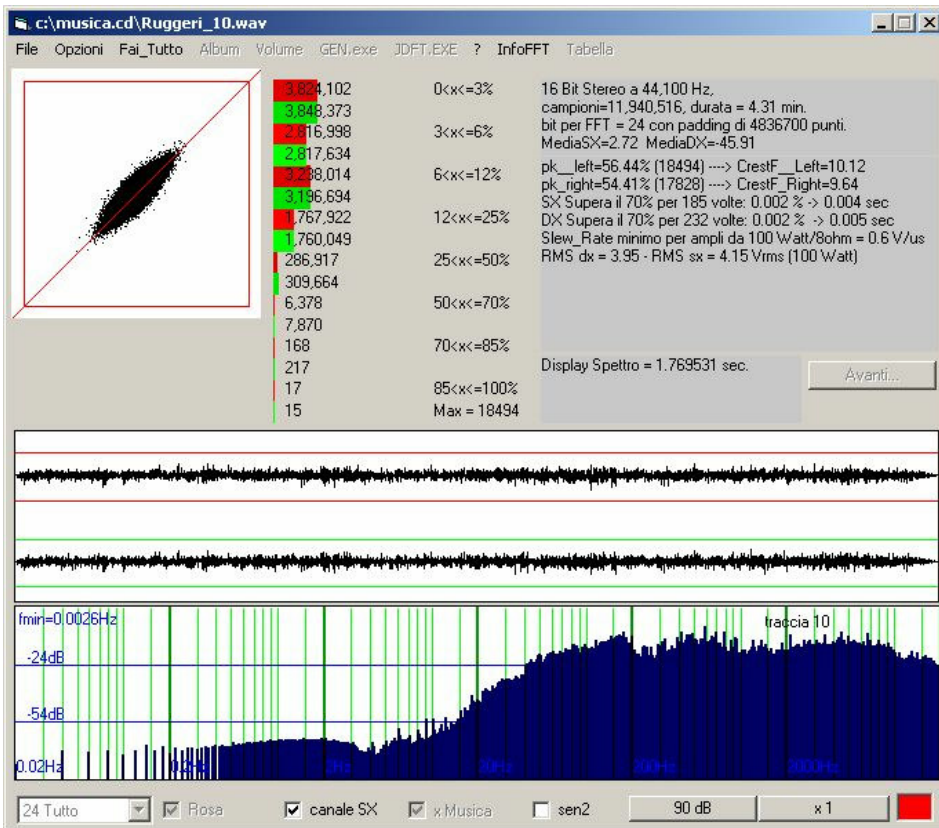


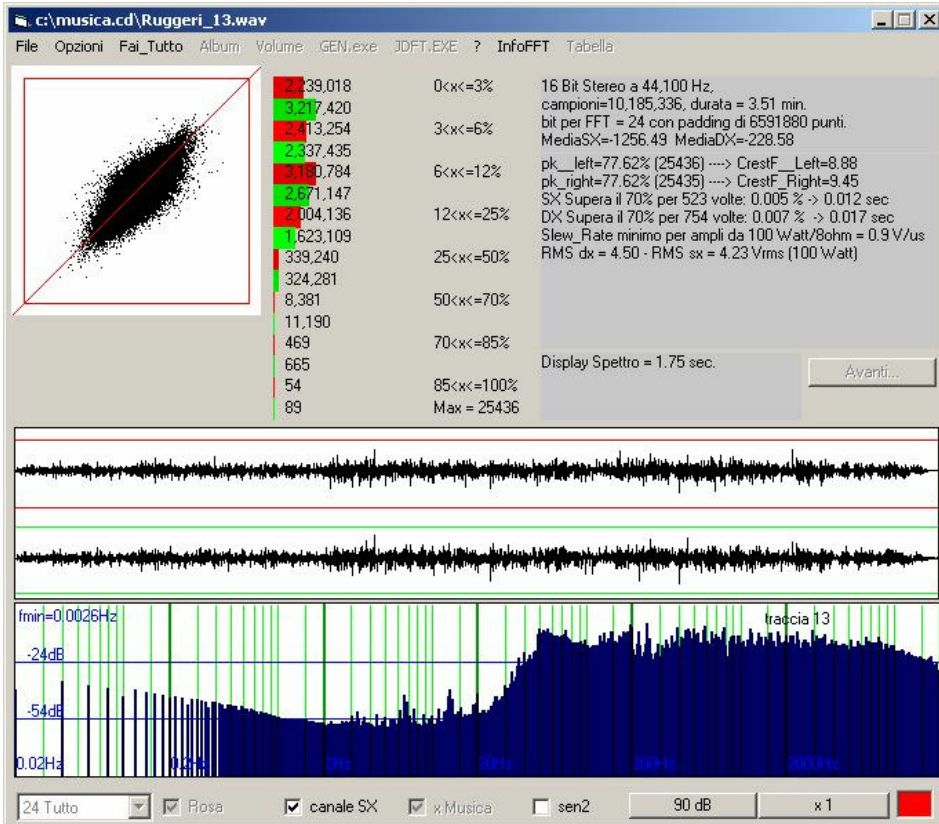
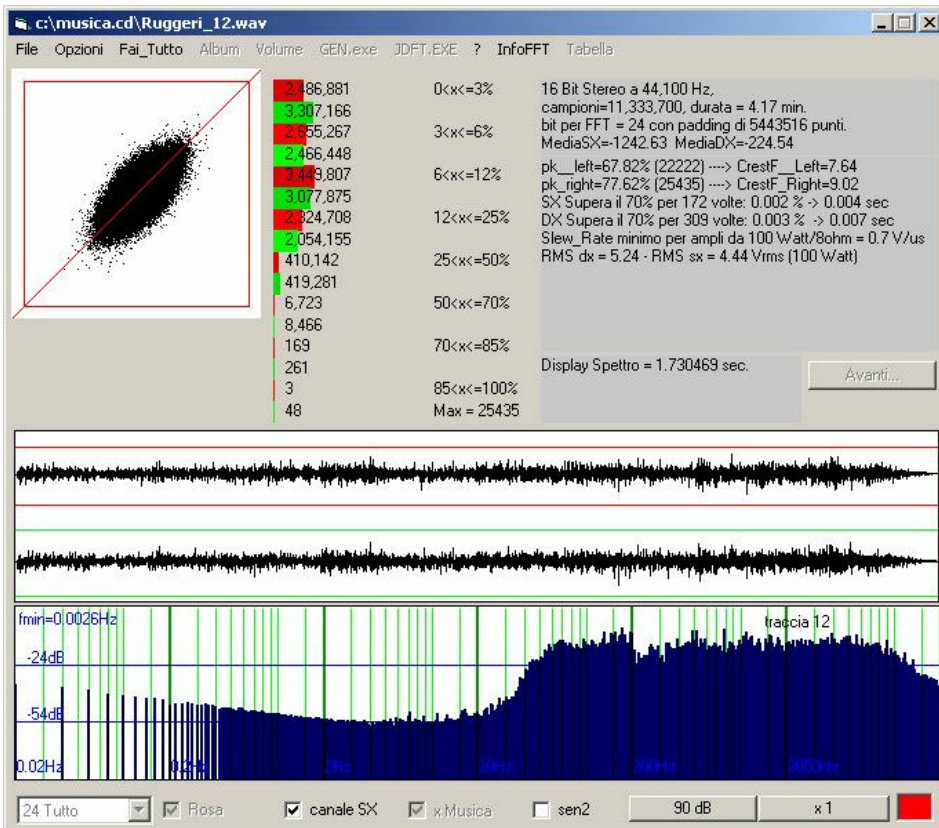












Analisi Spettrale - Mario Bon

