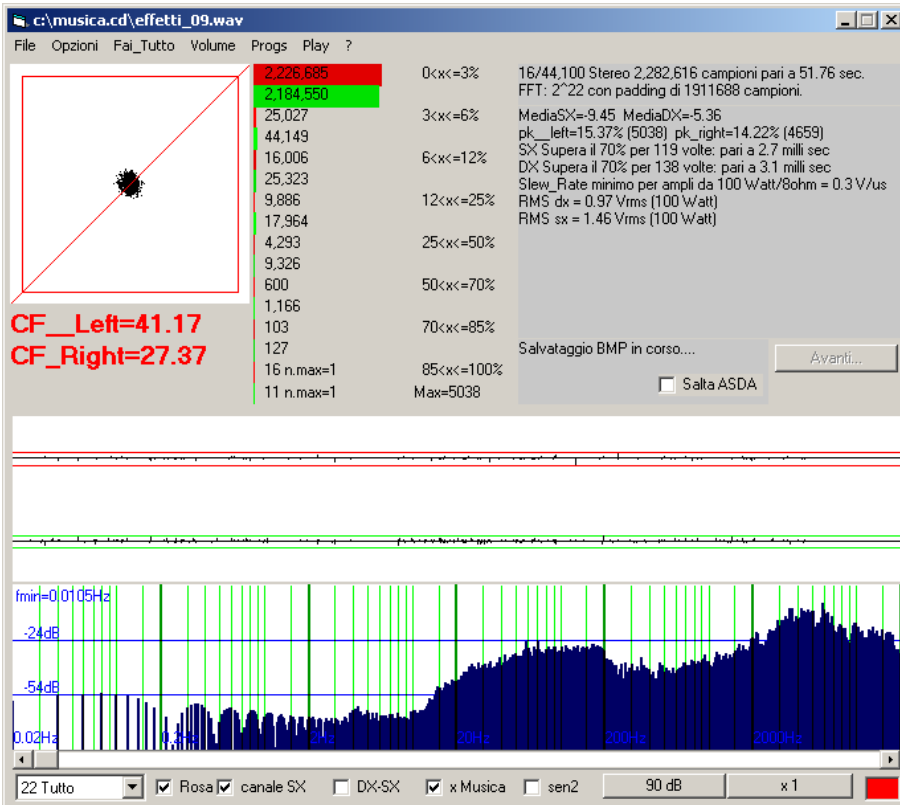
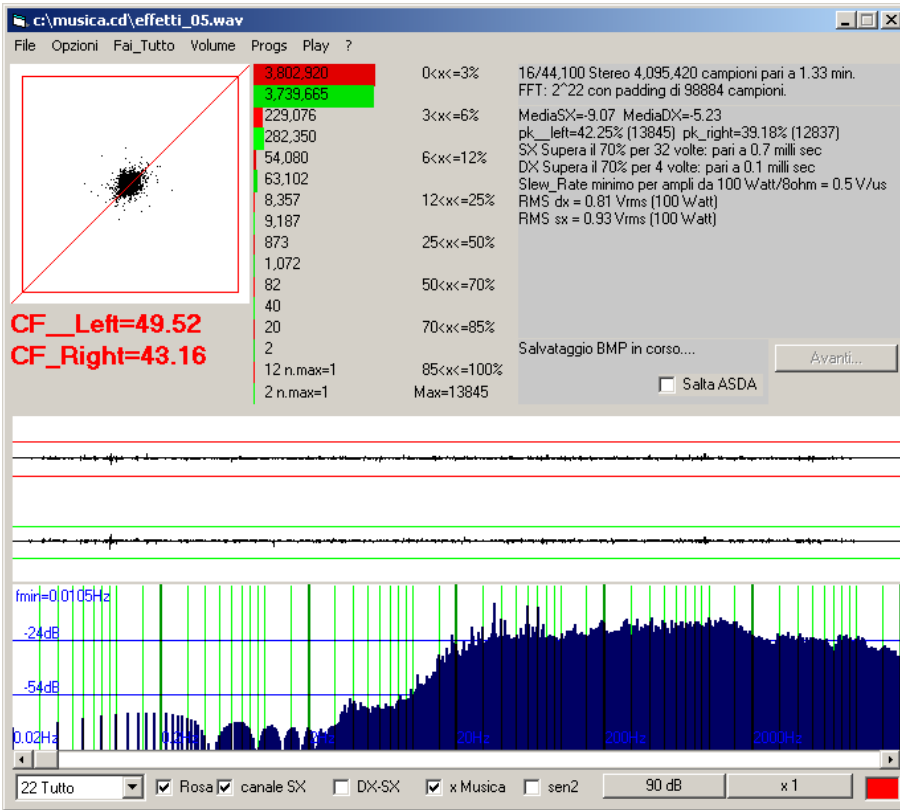
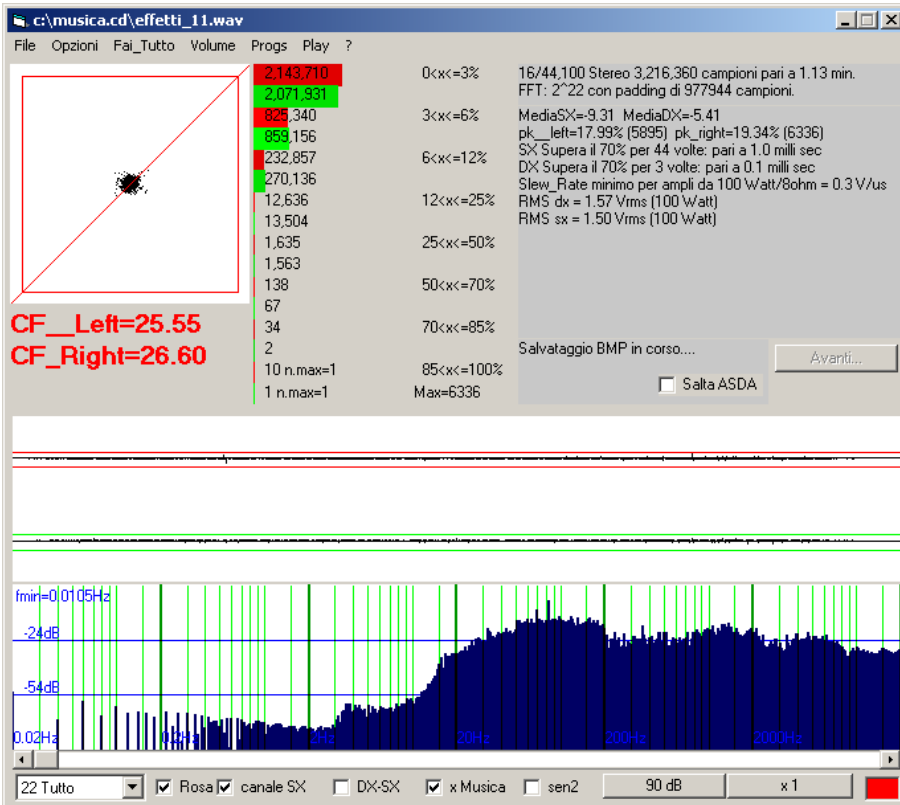
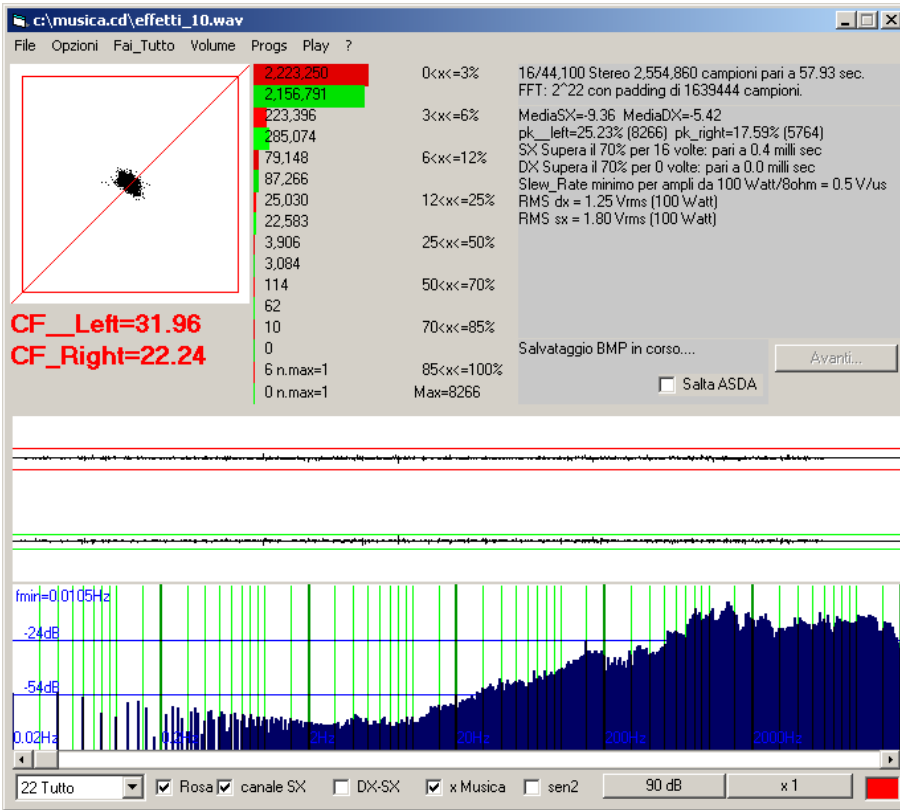


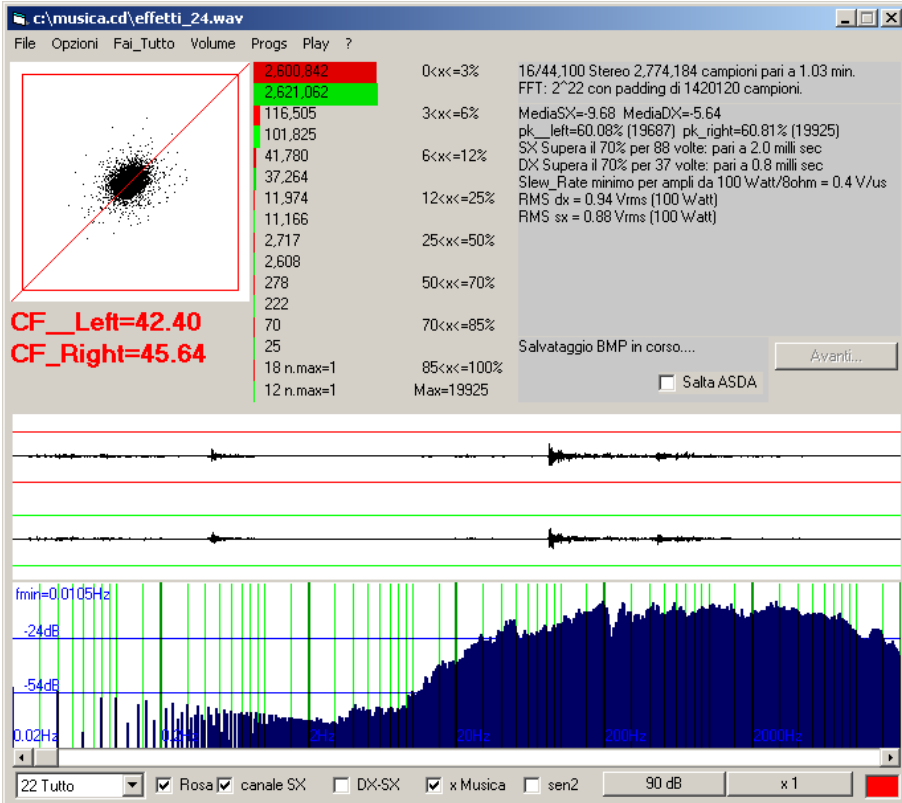
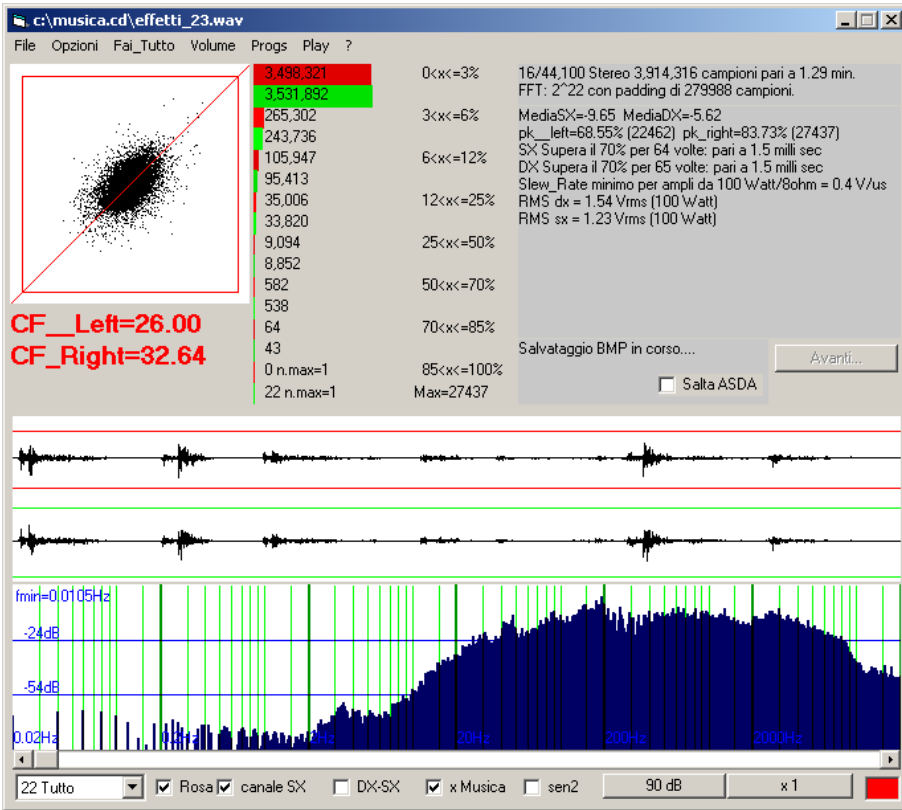
**Fattore di Cresta del segnale musicale
(...) : Effetti Sonori Vol 1**

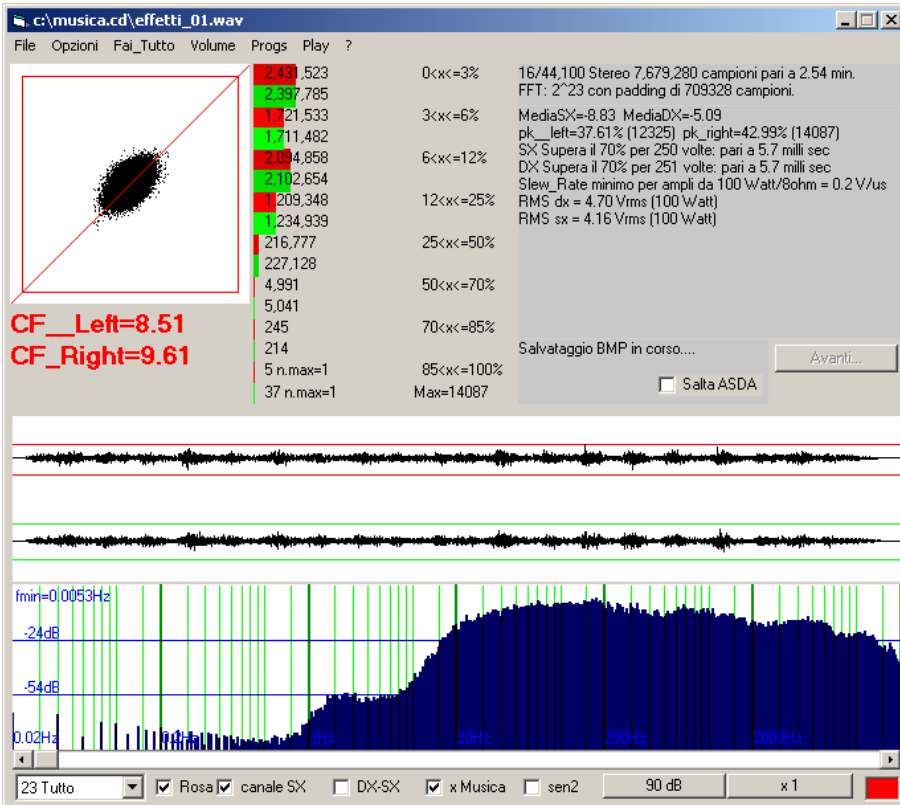
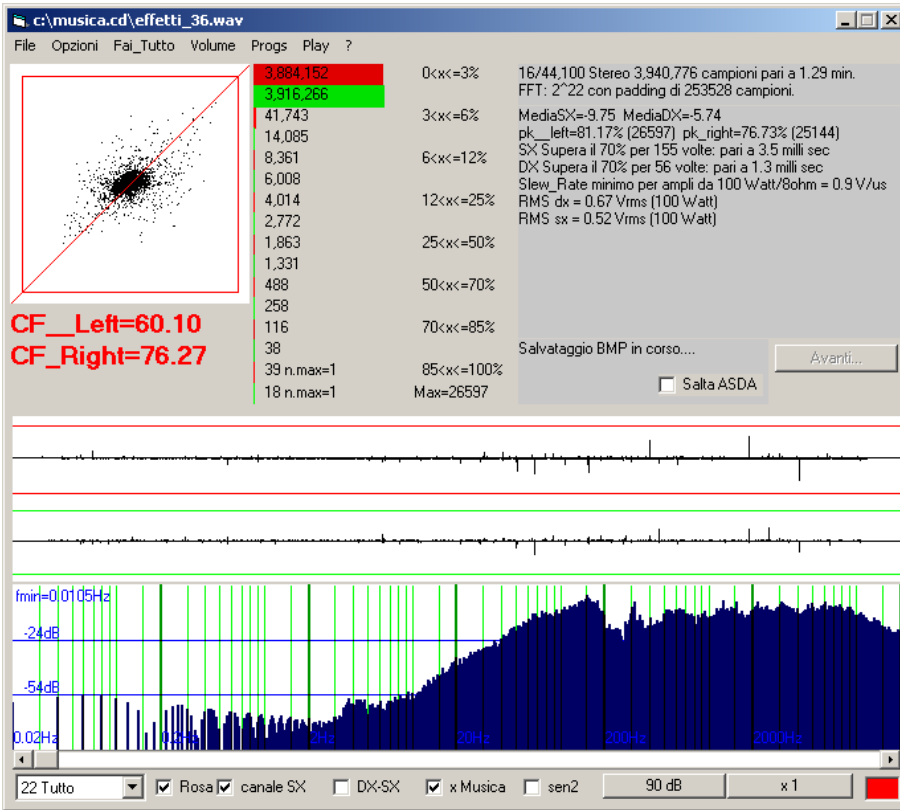
1992 Via Veneto CDOR 9290 Orizzonte. La raccolta più completa di Effetti Sonori Professionali per Fonici, DJ, e editing video: Acqua, vento, fuoco ed altri. Le tracce con CF più alti sono presentate per prime. Si noti traccia 36.

Traccia	Max	CF	SlewRate	
effetti_05	13845	49.52	0.47 <<	rientranza scogli
effetti_09	05038	41.17	0.31 <<	sorgente
effetti_10	08266	31.96	0.55 <<	ruscello
effetti_11	06336	26.60	0.30	ruscello in una foresta
effetti_23	27437	32.64	0.41	pioggia in città
effetti_24	19925	45.64	0.39 <<	pioggia e tuoni
effetti_36	26597	76.27	0.91 <<	piccolo fuoco
effetti_01	14087	9.61	0.23	Oceano
effetti_02	19097	11.22	0.24	Onde lunghe
effetti_03	18709	10.94	0.54	Onde su sabbia e sassi
effetti_04	12842	18.92	0.46	Rientranza scogli 2
effetti_06	09069	15.90	0.26	
effetti_07	09322	14.03	0.16	
effetti_08	11275	5.93	0.26	
effetti_12	18536	11.38	0.81	
effetti_13	12923	7.62	0.73	
effetti_14	16183	5.57	0.50	
effetti_15	18112	6.21	0.27	
effetti_16	10534	7.94	0.68	
effetti_17	18374	17.87	0.80	
effetti_18	16082	6.31	0.63	
effetti_19	17702	13.38	0.73	pioggia su tetto in fibra di vetro
effetti_20	20241	9.11	0.91	
effetti_21	20370	15.17	0.87	
effetti_22	27659	17.40	0.84	
effetti_25	19896	21.58	0.56	
effetti_26	08837	6.33	0.05	
effetti_27	07343	5.53	0.02	
effetti_28	09295	6.46	0.39	
effetti_29	10810	7.28	0.48	
effetti_30	18050	10.61	0.53	
effetti_31	11543	10.26	0.51	
effetti_32	13236	27.81	0.64	
effetti_33	14069	18.31	0.78	
effetti_34	13988	21.33	0.60	
effetti_35	18401	15.60	0.85	
effetti_37	16090	16.04	0.91	
effetti_38	21022	16.33	0.91	
effetti_39	22075	17.47	0.93	
effetti_40	22871	12.96	0.70	



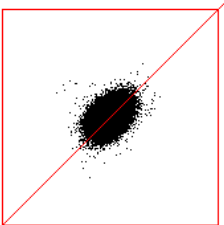








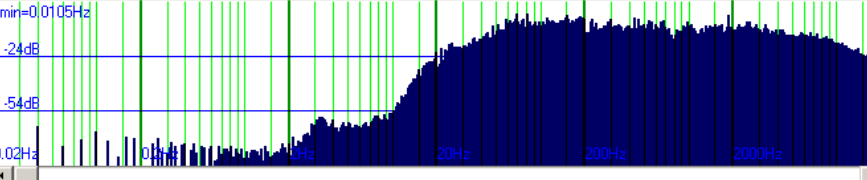
c:\musica.cd\effetti_02.wav

File Opzioni Fai_Tutto Volume Progs Play ?



CF_Left=9.41
CF_Right=11.22

945,675	0<x<=3%	16/44,100 Stereo 2,716,560 campioni pari a 1.02 min.
975,549		FFT: 2^22 con padding di 1477744 campioni.
619,634	3<x<=6%	MediaSX=-8.92 MediaDX=-5.08
617,016		pk_left=49.66% (16271) pk_right=58.28% (19097)
742,068	6<x<=12%	SX Supera il 70% per 38 volte: pari a 0.9 milli sec
725,964		DX Supera il 70% per 48 volte: pari a 1.1 milli sec
775,766	12<x<=25%	Slew_Rate minimo per ampli da 100 Watt/8ohm = 0.2 V/us
59,258		RMS dx = 4.25 Vrms (100 Watt)
38,899	25<x<=50%	RMS sx = 3.56 Vrms (100 Watt)
38,316		
480	50<x<=70%	
409		
36	70<x<=85%	
39		
2 n.max=1	85<x<=100%	Salvataggio BMP in corso...
9 n.max=1	Max=19097	<input type="checkbox"/> Salta ASDA <input type="button" value="Avanti..."/>

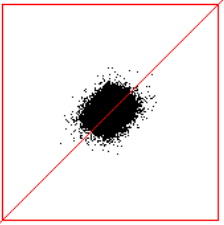




fmin=0.0105Hz
-24dB
-54dB
0.02Hz 20Hz 200Hz 2000Hz

22 Tutto Rosa canale SX DX-SX x Musica sen2 90 dB x 1

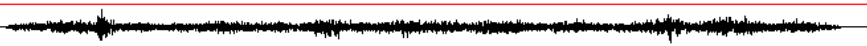

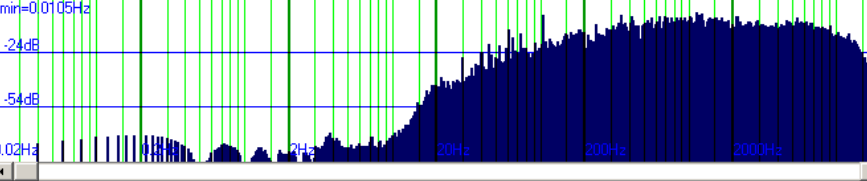
c:\musica.cd\effetti_03.wav

File Opzioni Fai_Tutto Volume Progs Play ?



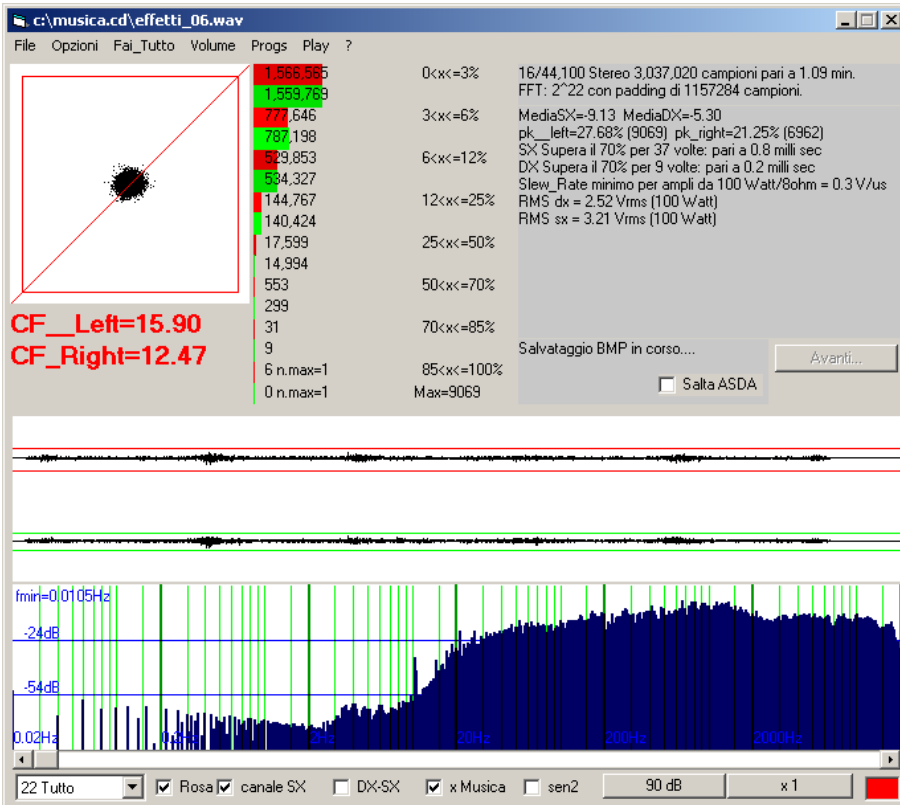
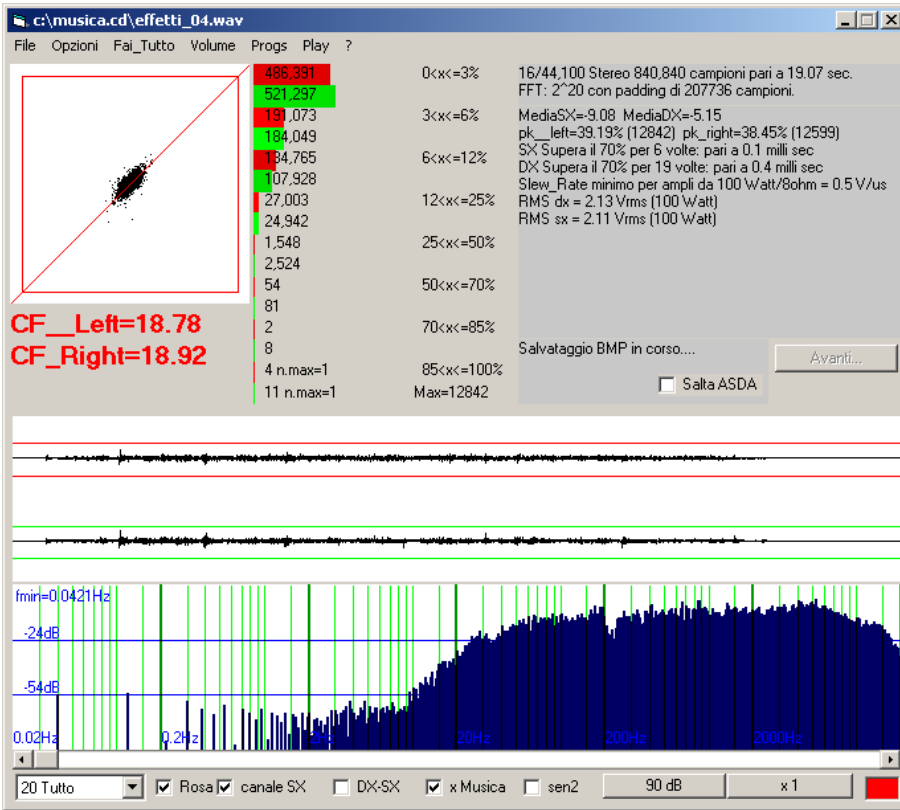
CF_Left=10.94
CF_Right=9.15

749,627	0<x<=3%	16/44,100 Stereo 2,181,480 campioni pari a 49.47 sec.
799,896		FFT: 2^22 con padding di 2012824 campioni.
502,146	3<x<=6%	MediaSX=-8.95 MediaDX=-5.09
504,858		pk_left=57.10% (18709) pk_right=46.34% (15185)
597,753	6<x<=12%	SX Supera il 70% per 56 volte: pari a 1.3 milli sec
563,459		DX Supera il 70% per 13 volte: pari a 0.3 milli sec
497,303	12<x<=25%	Slew_Rate minimo per ampli da 100 Watt/8ohm = 0.5 V/us
277,765		RMS dx = 3.66 Vrms (100 Watt)
33,907	25<x<=50%	RMS sx = 4.37 Vrms (100 Watt)
33,133		
688	50<x<=70%	
416		
50	70<x<=85%	
13		
6 n.max=1	85<x<=100%	Salvataggio BMP in corso...
0 n.max=1	Max=18709	<input type="checkbox"/> Salta ASDA <input type="button" value="Avanti..."/>

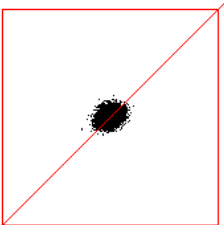
fmin=0.0105Hz
-24dB
-54dB
0.02Hz 20Hz 200Hz 2000Hz

22 Tutto Rosa canale SX DX-SX x Musica sen2 90 dB x 1




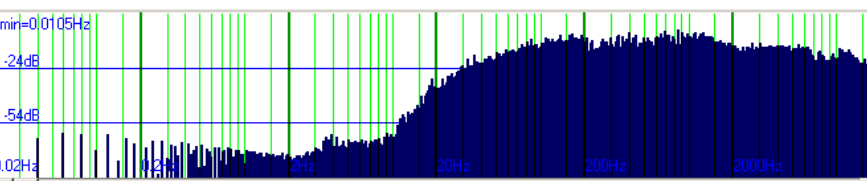
c:\musica.cd\effetti_07.wav

File Opzioni Fai_Tutto Volume Progs Play ?



CF_Left=14.03
CF_Right=12.02

1,398,060	0<x<=3%	16/44,100 Stereo 2,977,044 campioni pari a 1.08 min. FFT: 2^22 con padding di 1217260 campioni.
1,570,643		
758,912	3<x<=6%	MediaSX=-9.18 MediaDX=-5.33
726,012		pk_left=28.45% (9322) pk_right=21.56% (7066)
593,018	6<x<=12%	SX Supera il 70% per 31 volte: pari a 0.7 milli sec
505,315		DX Supera il 70% per 4 volte: pari a 0.1 milli sec
203,673	12<x<=25%	Slew_Rate minimo per ampli da 100 Watt/8ohm = 0.2 V/us
158,620		RMS dx = 2.85 Vrms (100 Watt)
25,738	25<x<=50%	RMS sx = 3.33 Vrms (100 Watt)
16,274		
612	50<x<=70%	
176		
24	70<x<=85%	
4		Salvataggio BMP in corso...
7 n.max=1	85<x<=100%	<input type="checkbox"/> Salta ASDA <input type="button" value="Avanti..."/>
0 n.max=1	Max=9322	

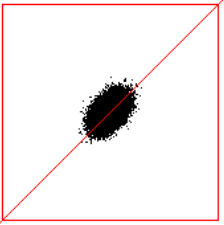



fmin=0.0105Hz
-24dB
-54dB
0.02Hz 0.2Hz 2Hz 20Hz 200Hz 2000Hz

22 Tutto Rosa canale SX DX-SX x Musica sen2 90 dB x 1

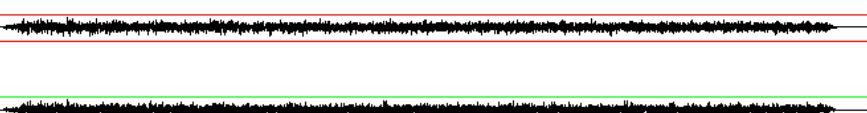
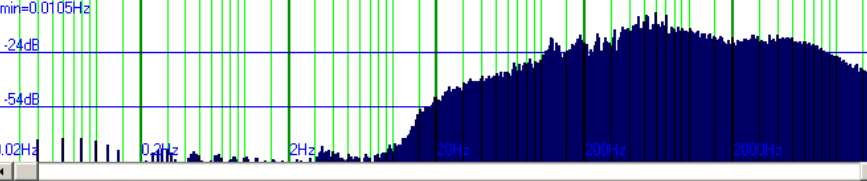
c:\musica.cd\effetti_08.wav

File Opzioni Fai_Tutto Volume Progs Play ?



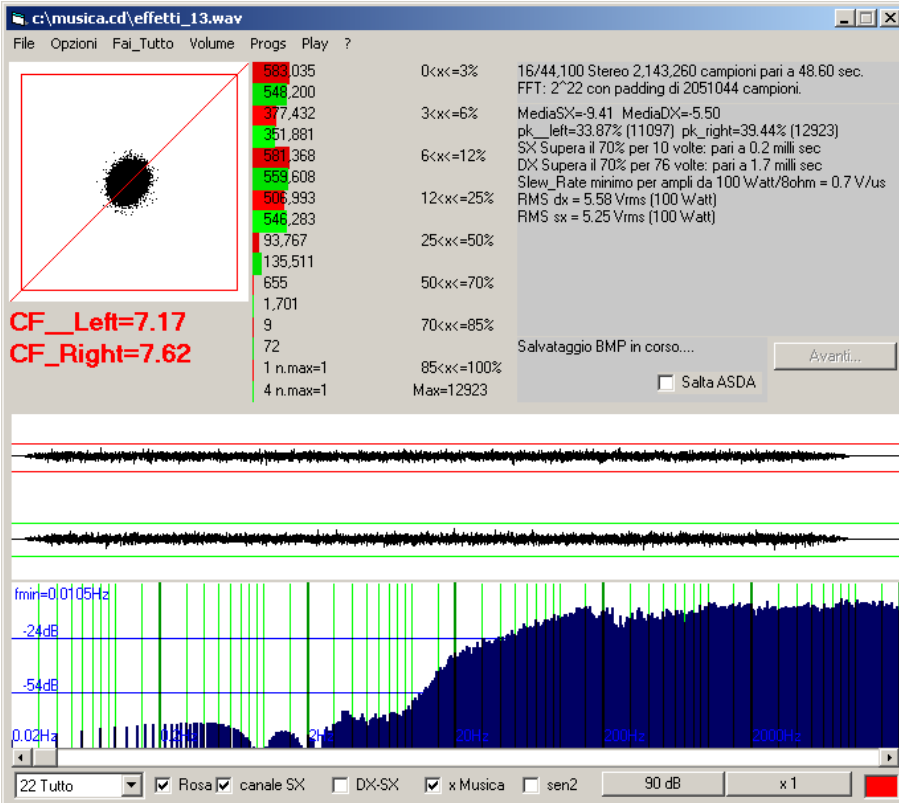
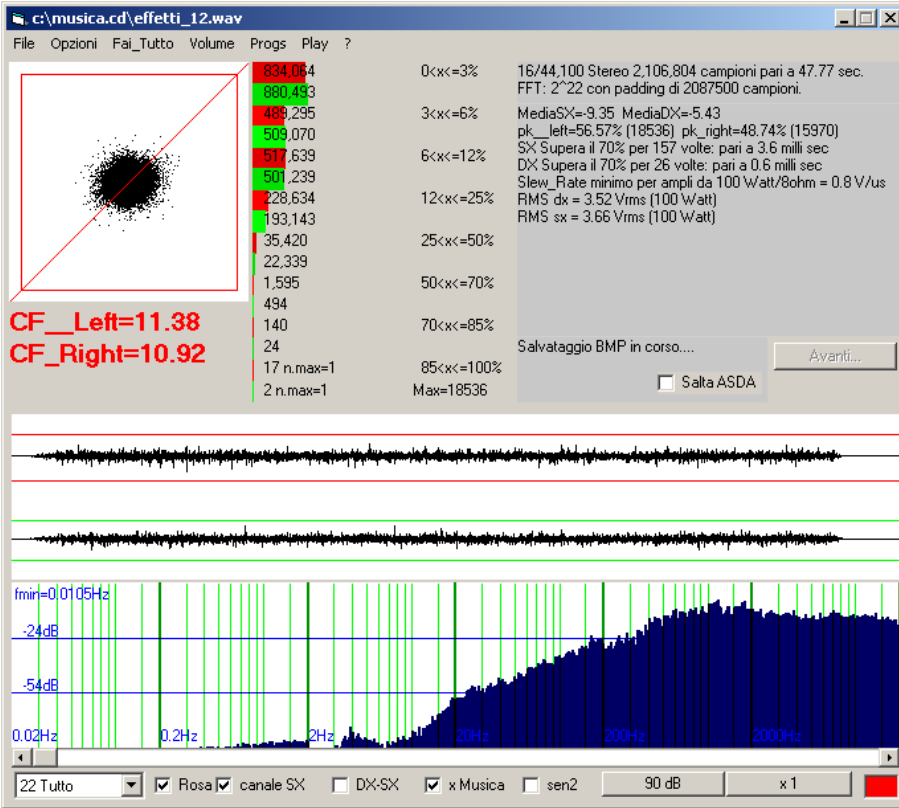
CF_Left=5.93
CF_Right=5.90

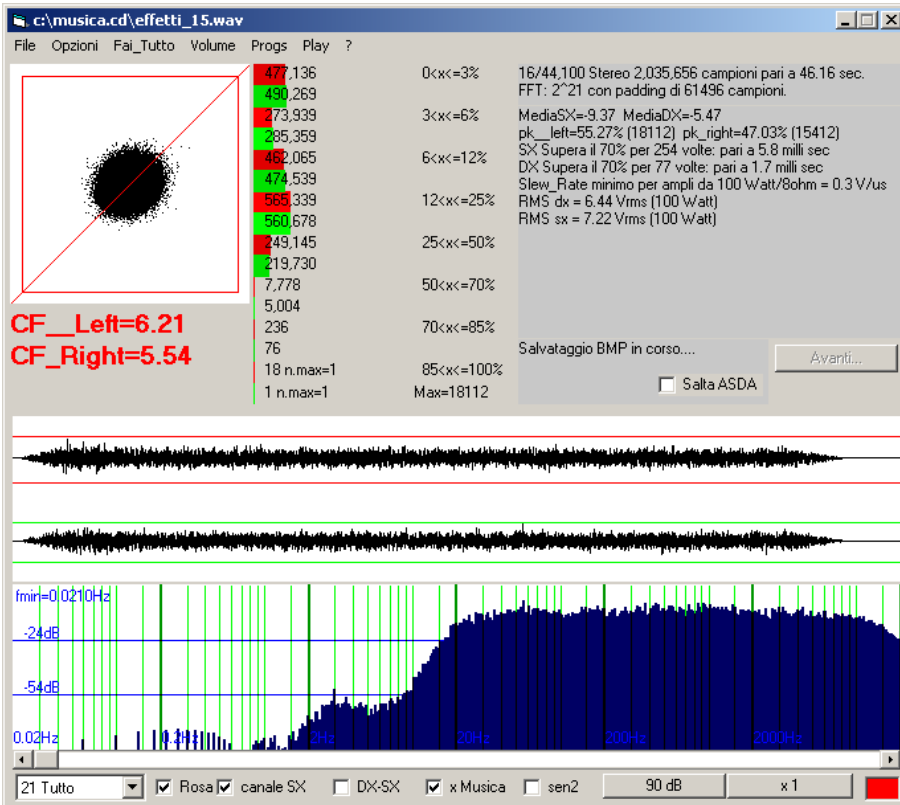
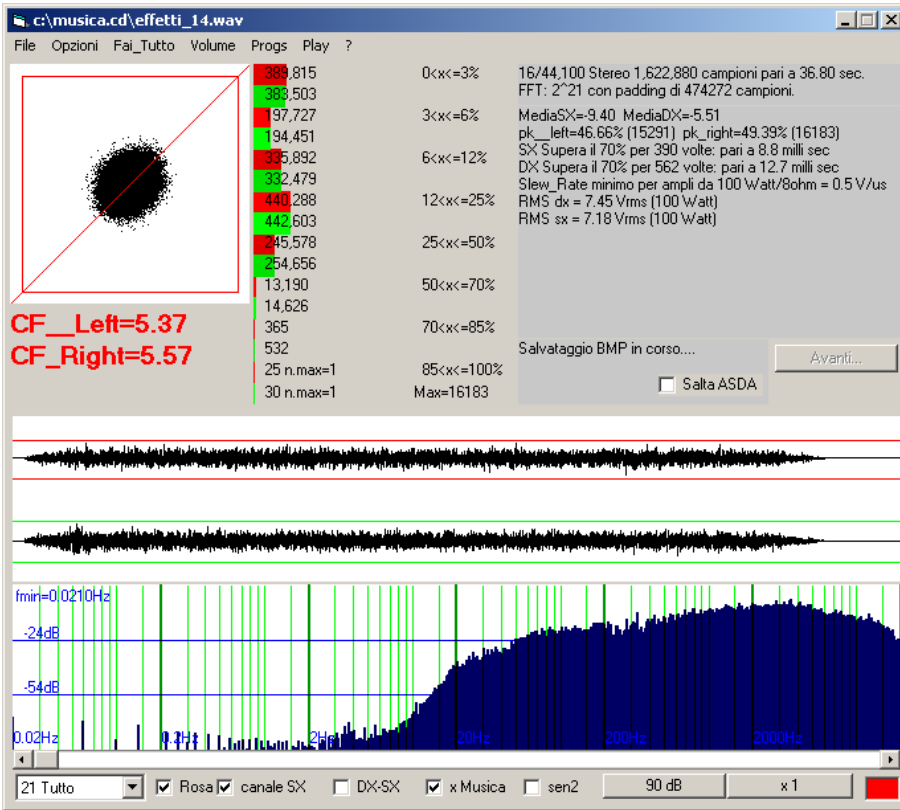
501,596	0<x<=3%	16/44,100 Stereo 2,331,420 campioni pari a 52.87 sec. FFT: 2^22 con padding di 1862884 campioni.
482,651		
328,256	3<x<=6%	MediaSX=-9.24 MediaDX=-5.39
310,915		pk_left=32.28% (10578) pk_right=34.41% (11275)
562,795	6<x<=12%	SX Supera il 70% per 199 volte: pari a 4.5 milli sec
534,068		DX Supera il 70% per 437 volte: pari a 9.9 milli sec
668,918	12<x<=25%	Slew_Rate minimo per ampli da 100 Watt/8ohm = 0.3 V/us
673,003		RMS dx = 6.74 Vrms (100 Watt)
263,562	25<x<=50%	RMS sx = 6.78 Vrms (100 Watt)
317,213		
8,094	50<x<=70%	
13,133		
194	70<x<=85%	
397		Salvataggio BMP in corso...
5 n.max=1	85<x<=100%	<input type="checkbox"/> Salta ASDA <input type="button" value="Avanti..."/>
40 n.max=1	Max=11275	

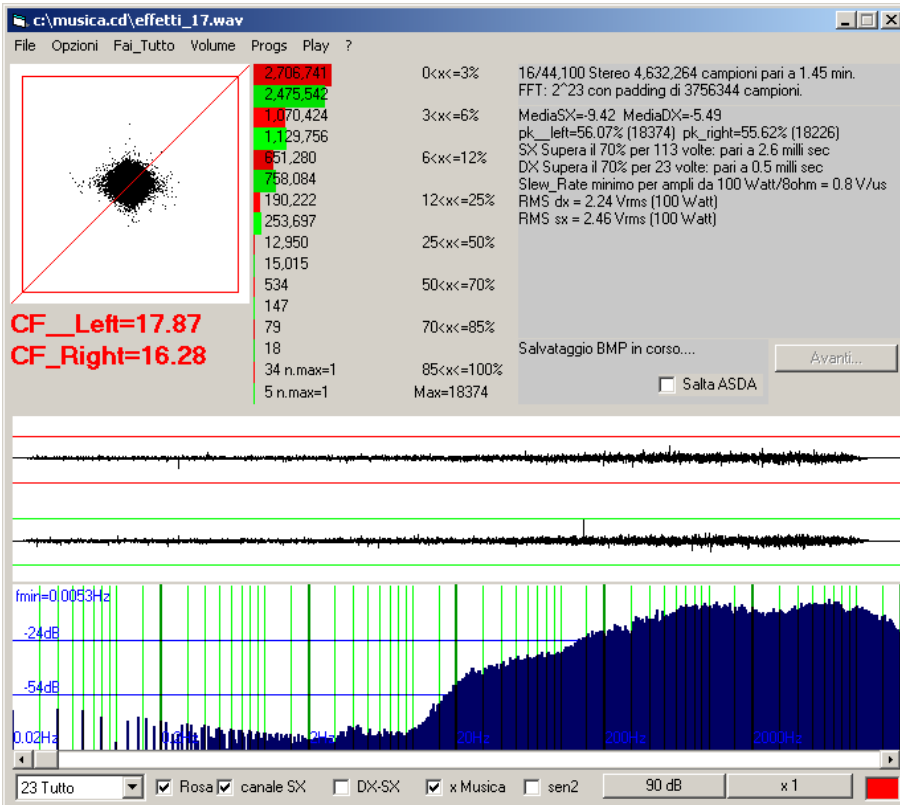
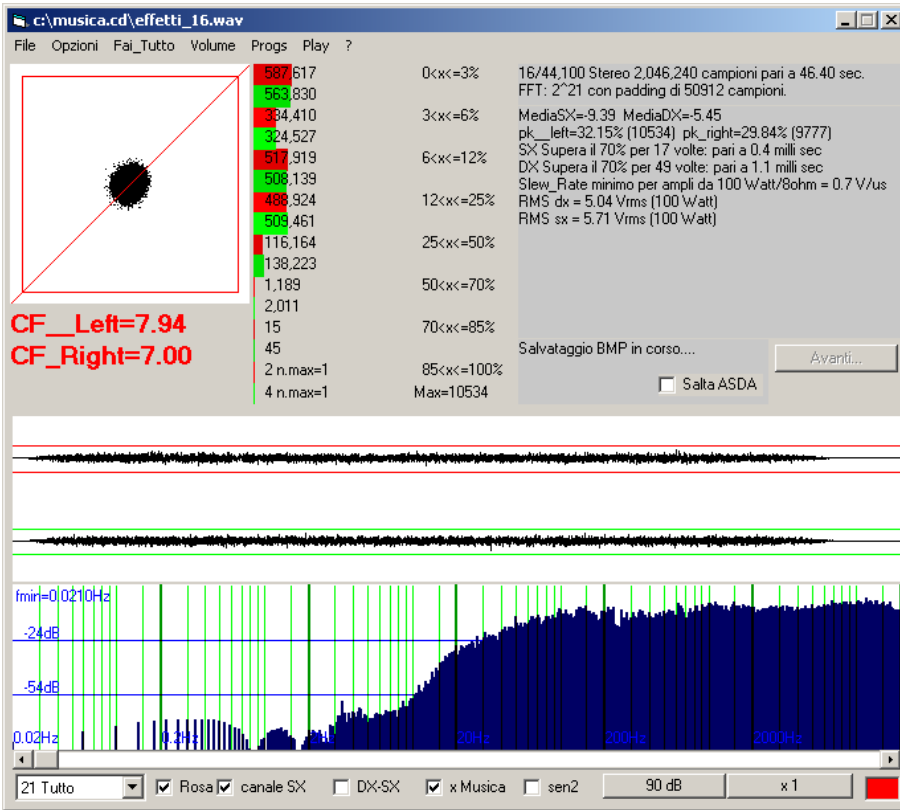



fmin=0.0105Hz
-24dB
-54dB
0.02Hz 0.2Hz 2Hz 20Hz 200Hz 2000Hz

22 Tutto Rosa canale SX DX-SX x Musica sen2 90 dB x 1

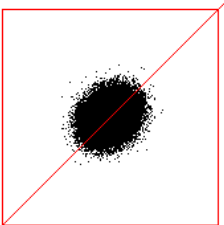







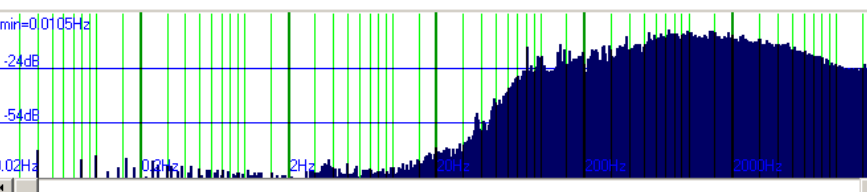
c:\musica.cd\effetti_18.wav

File Opzioni Fai_Tutto Volume Progs Play ?



CF_Left=6.27
CF_Right=6.31

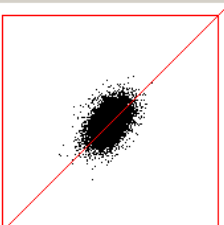
585,901	0<x<=3%	16/44,100 Stereo 2,747,136 campioni pari a 1.02 min. FFT: 2^22 con padding di 1447168 campioni.
585,582		
408,292	3<x<=6%	MediaSX=-9.42 MediaDX=-5.48
409,787		pk_left=49.08% (16082) pk_right=49.00% (16055)
678,991	6<x<=12%	SX Supera il 70% per 830 volte: pari a 18.8 milli sec
678,660		DX Supera il 70% per 664 volte: pari a 15.1 milli sec
759,986	12<x<=25%	Slew_Rate minimo per ampli da 100 Watt/8ohm = 0.6 V/us
759,342		RMS dx = 6.38 Vrms (100 Watt)
803,568	25<x<=50%	RMS sx = 6.34 Vrms (100 Watt)
299,493		
14,568	50<x<=70%	
13,608		
769	70<x<=85%	
617		
61 n.max=1	85<x<=100%	Salvataggio BMP in corso...
47 n.max=1	Max=16082	<input type="checkbox"/> Salta ASDA Avanti...

22 Tutto Rosa canale SX DX-SX x Musica sen2 90 dB x 1


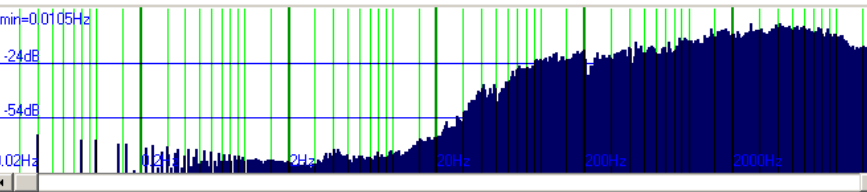
c:\musica.cd\effetti_19.wav

File Opzioni Fai_Tutto Volume Progs Play ?

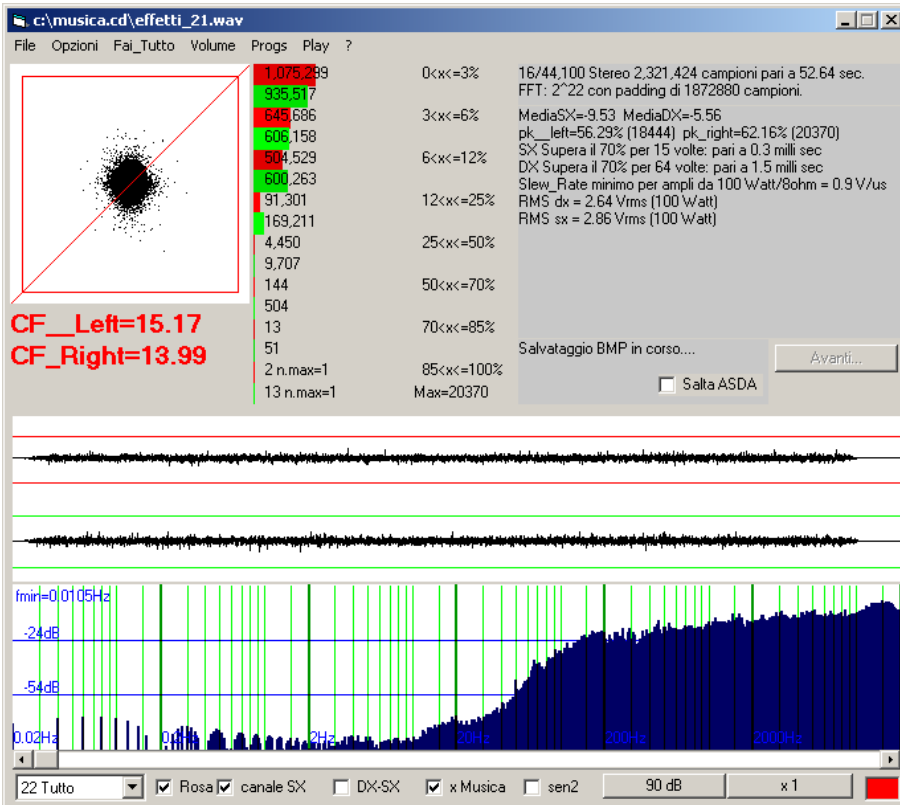
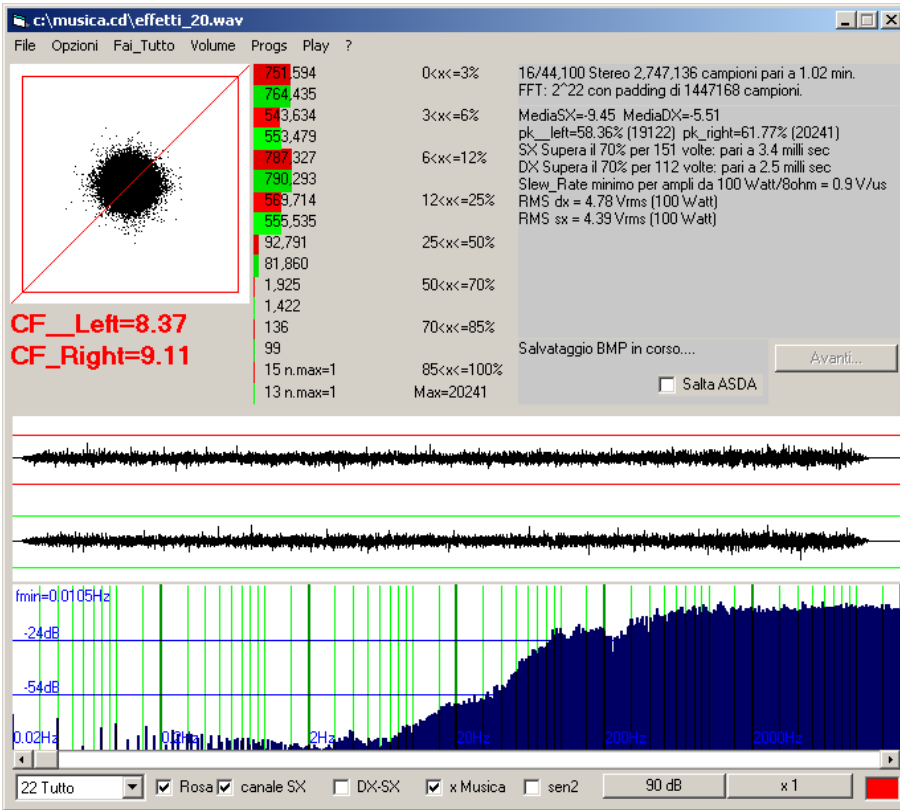


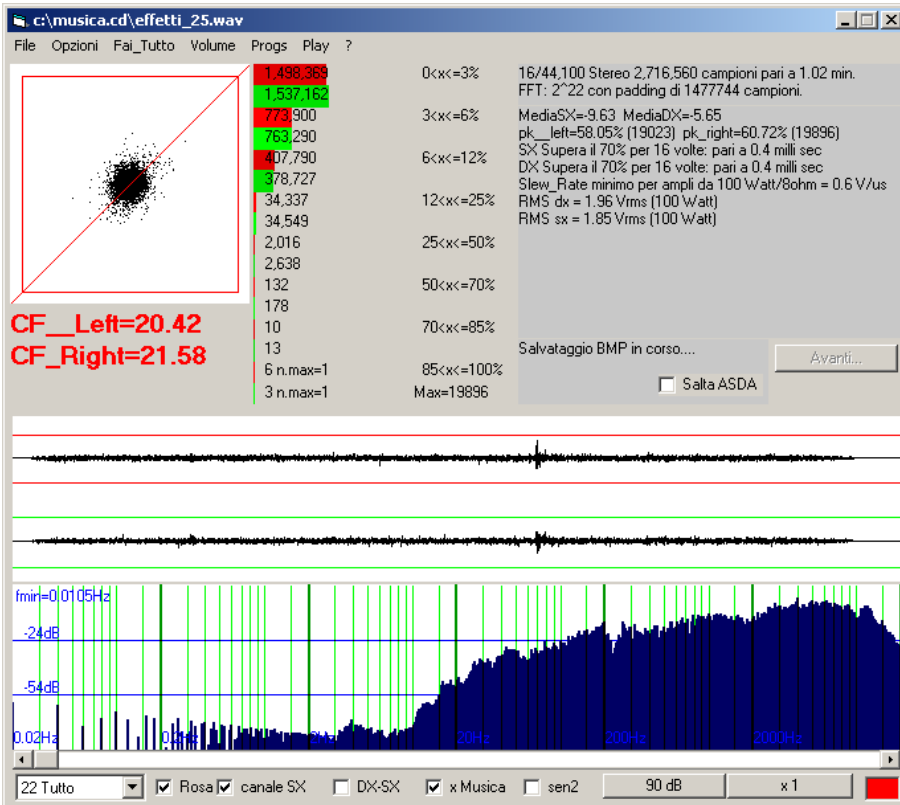
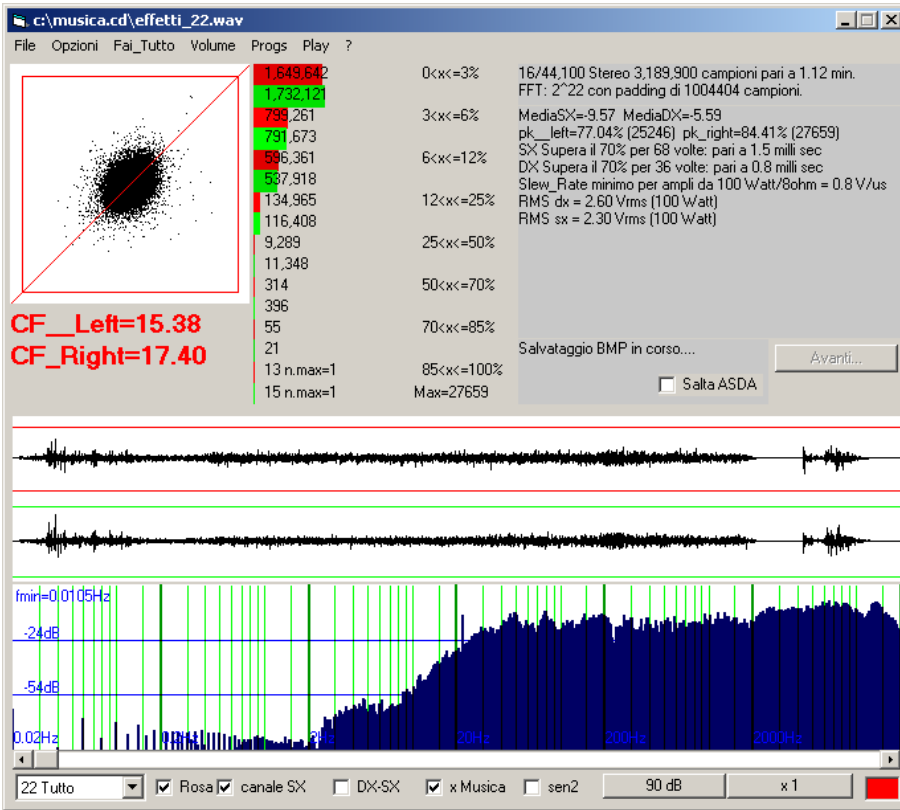
CF_Left=13.38
CF_Right=12.70

1,383,917	0<x<=3%	16/44,100 Stereo 2,783,004 campioni pari a 1.03 min. FFT: 2^22 con padding di 1411300 campioni.
1,224,208		
697,438	3<x<=6%	MediaSX=-9.44 MediaDX=-5.49
663,767		pk_left=47.07% (15424) pk_right=54.02% (17702)
535,877	6<x<=12%	SX Supera il 70% per 39 volte: pari a 0.9 milli sec
615,047		DX Supera il 70% per 90 volte: pari a 2.0 milli sec
149,399	12<x<=25%	Slew_Rate minimo per ampli da 100 Watt/8ohm = 0.7 V/us
247,051		RMS dx = 2.99 Vrms (100 Watt)
15,826	25<x<=50%	RMS sx = 3.15 Vrms (100 Watt)
31,780		
508	50<x<=70%	
1,061		
36	70<x<=85%	
80		
3 n.max=1	85<x<=100%	Salvataggio BMP in corso...
10 n.max=1	Max=17702	<input type="checkbox"/> Salta ASDA Avanti...

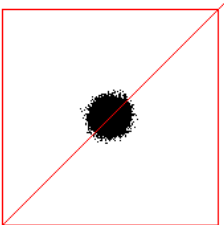
22 Tutto Rosa canale SX DX-SX x Musica sen2 90 dB x 1



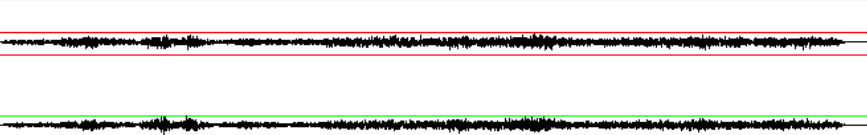
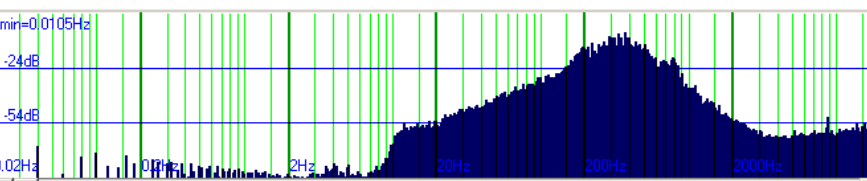


c:\musica.cd\effetti_26.wav

File Opzioni Fai_Tutto Volume Progs Play ?



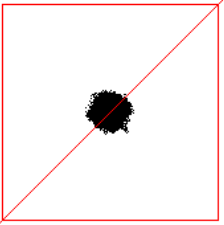
827,810	0<x<=3%	16/44,100 Stereo 2,740,080 campioni pari a 1.02 min. FFT: 2^22 con padding di 1454224 campioni.
634,441		
423,816	3<x<=6%	MediaSX=-9.66 MediaDX=-5.68
431,366		pk__left=26.97% (8837) pk__right=25.06% (8213)
661,272	6<x<=12%	SX Supera il 70% per 730 volte; pari a 16.6 milli sec
673,517		DX Supera il 70% per 842 volte; pari a 19.1 milli sec
710,121	12<x<=25%	Slew_Rate minimo per ampli da 100 Watt/8ohm = 0.0 V/us
709,407		RMS dx = 6.32 Vrms (100 Watt)
800,909	25<x<=50%	RMS sx = 6.60 Vrms (100 Watt)
277,851		
15,422	50<x<=70%	
12,656		
671	70<x<=85%	
767		Salvataggio BMP in corso...
59 n.max=1	85<x<=100%	<input type="checkbox"/> Salta ASDA <input type="button" value="Avanti..."/>
75 n.max=1	Max=8837	

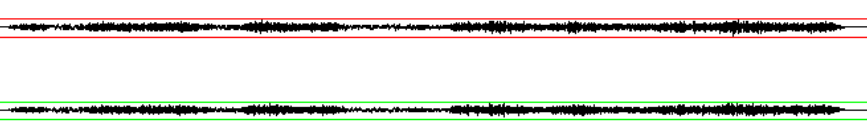
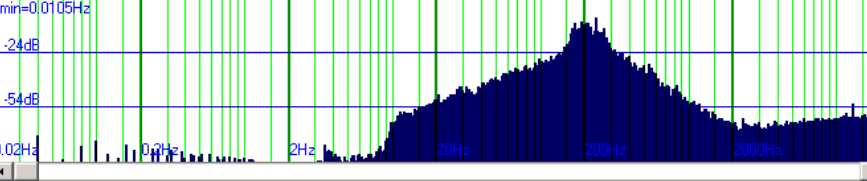
22 Tutto Rosa canale SX DX-SX x Musica sen2 90 dB x 1

c:\musica.cd\effetti_27.wav

File Opzioni Fai_Tutto Volume Progs Play ?



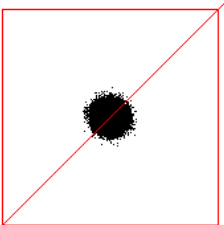
539,021	0<x<=3%	16/44,100 Stereo 2,732,436 campioni pari a 1.02 min. FFT: 2^22 con padding di 1461868 campioni.
543,269		
350,746	3<x<=6%	MediaSX=-9.74 MediaDX=-5.74
356,900		pk__left=22.41% (7343) pk__right=20.73% (6792)
609,561	6<x<=12%	SX Supera il 70% per 2397 volte; pari a 54.4 milli sec
629,484		DX Supera il 70% per 1362 volte; pari a 30.9 milli sec
796,888	12<x<=25%	Slew_Rate minimo per ampli da 100 Watt/8ohm = 0.0 V/us
797,178		RMS dx = 7.23 Vrms (100 Watt)
406,398	25<x<=50%	RMS sx = 7.53 Vrms (100 Watt)
377,963		
27,425	50<x<=70%	
21,280		
2,028	70<x<=85%	
1,289		Salvataggio BMP in corso...
369 n.max=1	85<x<=100%	<input type="checkbox"/> Salta ASDA <input type="button" value="Avanti..."/>
73 n.max=1	Max=7343	

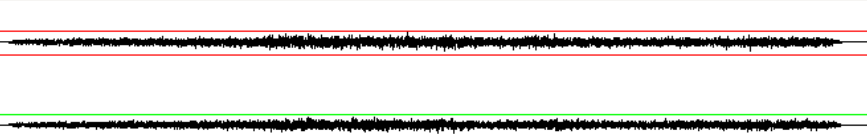
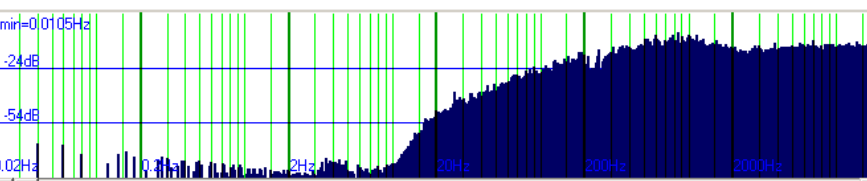
22 Tutto Rosa canale SX DX-SX x Musica sen2 90 dB x 1

c:\musica.cd\effetti_28.wav

File Opzioni Fai_Tutto Volume Progs Play ?



530,183 0<x<=3% 16/44,100 Stereo 2,491,944 campioni pari a 56.51 sec.
 FFT: 2^22 con padding di 1702360 campioni.
 559,378 3<x<=6% MediaSX=-9.80 MediaDX=-5.79
 346,522 pk__left=28.12% (9215) pk__right=28.37% (9295)
 367,606 SX Supera il 70% per 615 volte; pari a 13.9 milli sec
 588,287 6<x<=12% DX Supera il 70% per 402 volte; pari a 9.1 milli sec
 612,093 Slew_Rate minimo per ampli da 100 Watt/8ohm = 0.4 V/us
 700,782 12<x<=25% RMS dx = 6.68 Vrms (100 Watt)
 582,513 RMS sx = 6.19 Vrms (100 Watt)
 810,816 25<x<=50%
 260,315 50<x<=70%
 14,739 70<x<=85%
 9,637 Salvataggio BMP in corso... Avanti...
 568 CF__Left=5.99
 359 CF__Right=6.46
 47 n.max=1 85<x<=100%
 43 n.max=1 Max=9295 Salta ASDA

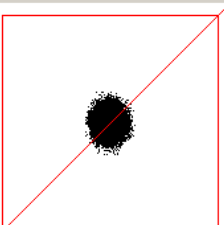



fmin=0.0105Hz
 -24dB
 -54dB
 0.02Hz 2Hz 20Hz 200Hz 2000Hz


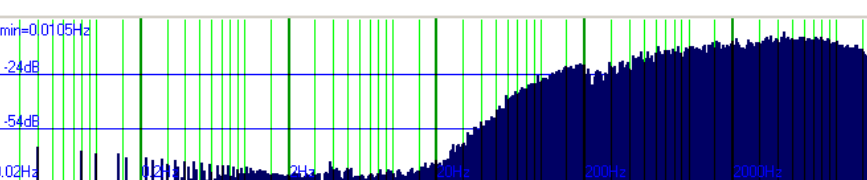
22 Tutto Rosa canale SX DX-SX x Musica sen2 90 dB x 1

c:\musica.cd\effetti_29.wav

File Opzioni Fai_Tutto Volume Progs Play ?



771,884 0<x<=3% 16/44,100 Stereo 2,805,936 campioni pari a 1.04 min.
 FFT: 2^22 con padding di 1388368 campioni.
 714,606 3<x<=6% MediaSX=-9.79 MediaDX=-5.77
 509,828 pk__left=26.19% (8581) pk__right=32.99% (10810)
 474,337 SX Supera il 70% per 14 volte; pari a 0.3 milli sec
 758,901 6<x<=12% DX Supera il 70% per 524 volte; pari a 11.9 milli sec
 733,356 Slew_Rate minimo per ampli da 100 Watt/8ohm = 0.5 V/us
 620,599 12<x<=25% RMS dx = 6.21 Vrms (100 Watt)
 578,739 RMS sx = 5.49 Vrms (100 Watt)
 143,615 25<x<=50%
 195,171 50<x<=70%
 3,095 70<x<=85%
 9,203 Salvataggio BMP in corso... Avanti...
 14 CF__Left=6.45
 483 CF__Right=7.28
 0 n.max=1 85<x<=100%
 41 n.max=1 Max=10810 Salta ASDA

fmin=0.0105Hz
 -24dB
 -54dB
 0.02Hz 2Hz 20Hz 200Hz 2000Hz

22 Tutto Rosa canale SX DX-SX x Musica sen2 90 dB x 1

