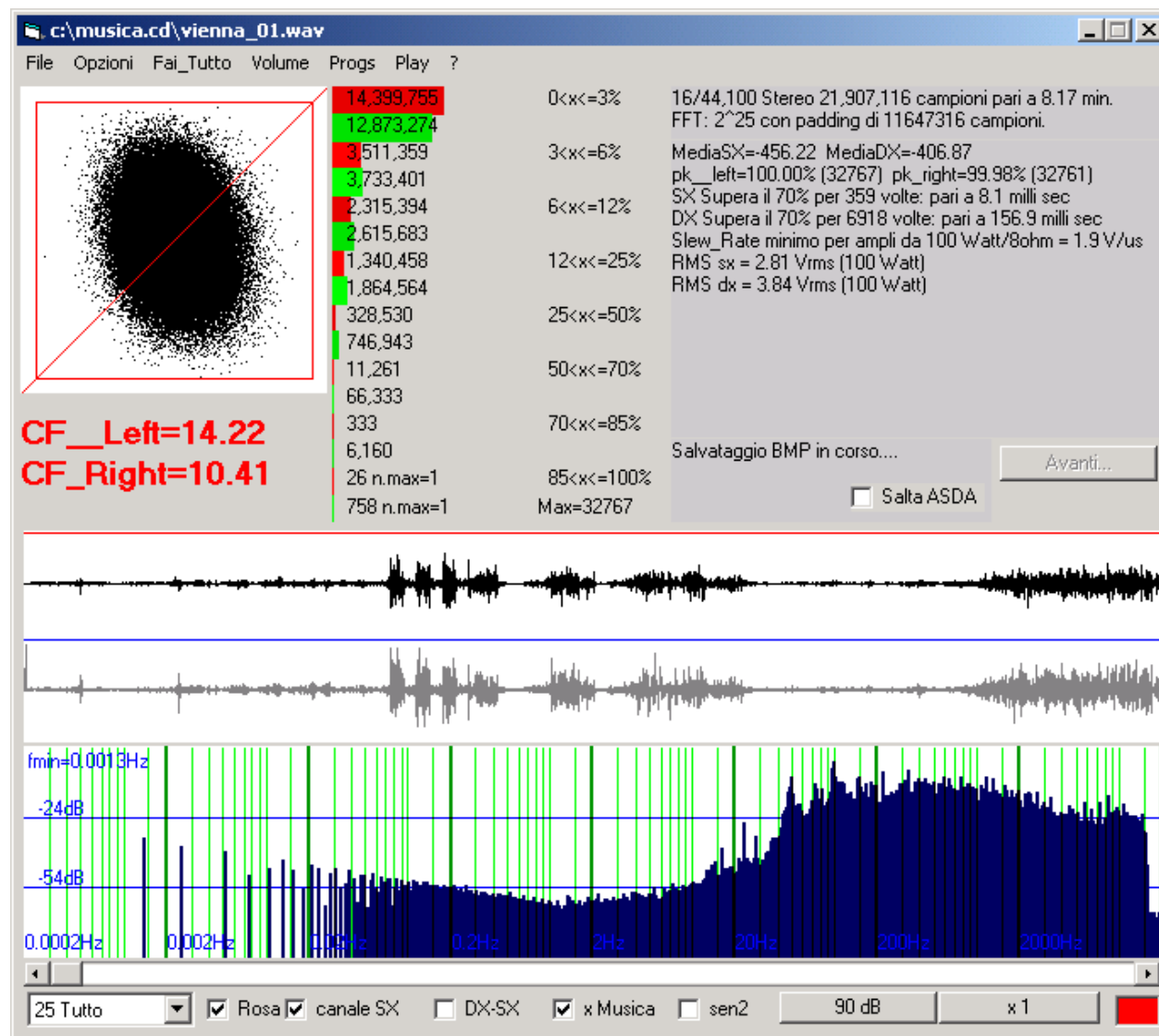
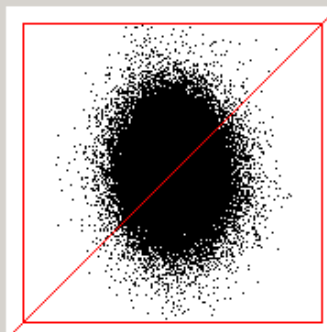


Fattore di Cresta del segnale musicale
autore.. : titolo album

Registrazione amatoriale del concerto di Vienna (capodanno 2009). Proabilmente è stato usato il controllo automatico del guadagno (AGC). Il registratore era posto su un lato della sala e l'immagine non è centrata. Il fattore di cresta varia da 8.62 a 14.22 (limitato dall'AGC). Il suono è comunque buono. La coda sulle bassissime frequenza è causata dal padding in presenza di un valo medio piuttosto alto.

Traccia	Max	CF
vienna_01 32767	14.22	< max cf
vienna_02 32702	9.70	
vienna_03 32767	14.10	
vienna_04 32767	13.62	
vienna_05 32755	8.62	min cf
vienna_06 32764	13.00	
vienna_07 32767	13.21	<
vienna_08 32767	12.50	
vienna_09 32718	12.05	<
vienna_10 32765	10.30	
vienna_11 32767	11.95	





CF_Left=9.70
CF_Right=8.30

2,086,864
1,708,510
1,211,980
1,092,701
1,089,994
1,153,811
565,088
816,495
96,373
262,410
2,732
16,437
152
1,735
1 n.max=1
585 n.max=1

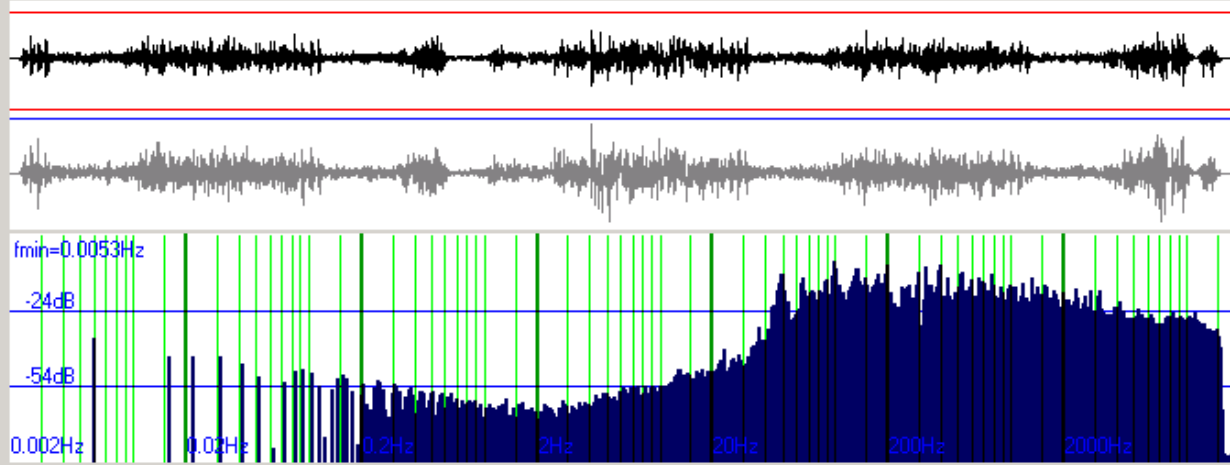
0<x<=3%
3<x<=6%
6<x<=12%
12<x<=25%
25<x<=50%
50<x<=70%
70<x<=85%
85<x<=100%
Max=32702

16/44,100 Stereo 5,052,684 campioni pari a 1.55 min.
FFT: 2^23 con padding di 3335924 campioni.
MediaSX=-431.84 MediaDX=-345.03
pk_left=85.45% (28000) pk_right=99.80% (32702)
SX Supera il 70% per 153 volte: pari a 3.5 milli sec
DX Supera il 70% per 2320 volte: pari a 52.6 milli sec
Slew_Rate minimo per ampli da 100 Watt/8ohm = 0.9 V/us
RMS sx = 4.12 Vrms (100 Watt)
RMS dx = 4.82 Vrms (100 Watt)

Salvataggio BMP in corso....

Avanti...

☐ Salta ASDA



23 Tutto

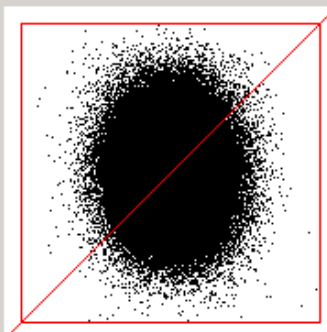
☒ Rosa ☒ canale SX ☐ DX-SX ☒ x Musica ☐ sen2

90 dB

x 1

c:\musica.cd\vienna_03.wav

File Opzioni Fai_Tutto Volume Progs Play ?



CF_Left=14.10
CF_Right=10.75

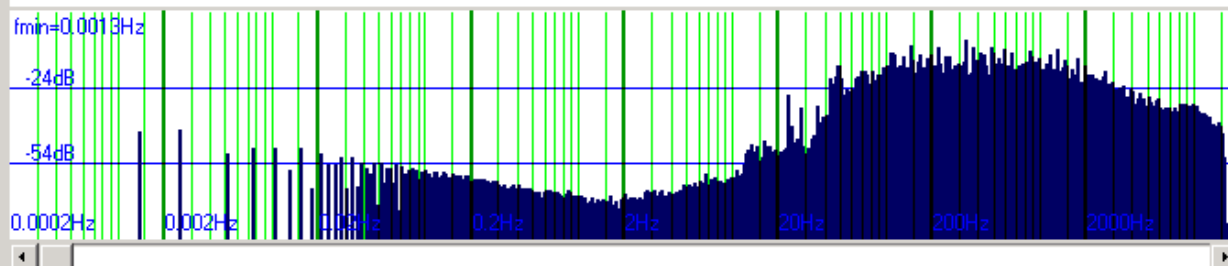
15,043,907
13,168,035
5,909,615
5,901,775
3,657,230
4,348,661
1,685,733
2,395,929
334,948
766,605
10,514
55,673
283
4,909
50 n.max=1
693 n.max=1

0<x<=3%
3<x<=6%
6<x<=12%
12<x<=25%
25<x<=50%
50<x<=70%
70<x<=85%
85<x<=100%
Max=32767

16/44,100 Stereo 26,642,280 campioni pari a 10.04 min.
FFT: 2^25 con padding di 6912152 campioni.
MediaSX=-396.44 MediaDX=-281.74
pk_left=99.56% (32624) pk_right=100.00% (32767)
SX Supera il 70% per 333 volte: pari a 7.6 milli sec
DX Supera il 70% per 5602 volte: pari a 127.0 milli sec
Slew_Rate minimo per ampli da 100 Watt/8ohm = 1.4 V/us
RMS sx = 2.84 Vrms (100 Watt)
RMS dx = 3.72 Vrms (100 Watt)

Salvataggio BMP in corso....

Avanti...

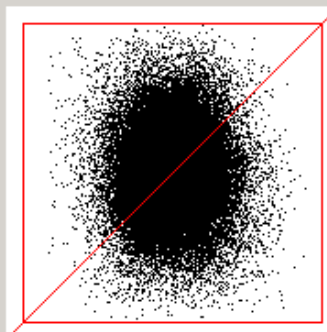
☐ Salta ASDA

25 Tutto

☒ Rosa ☒ canale SX☐ DX-SX☒ x Musica☐ sen2

90 dB

x 1



CF_Left=13.62
CF_Right=10.99

6,328,677
5,483,475
2,511,810
2,467,561
1,642,018
1,955,486
608,397
1,003,595
98,047
254,185
6,513
26,344
609
4,443
37 n.max=1
1,019 n.max=1

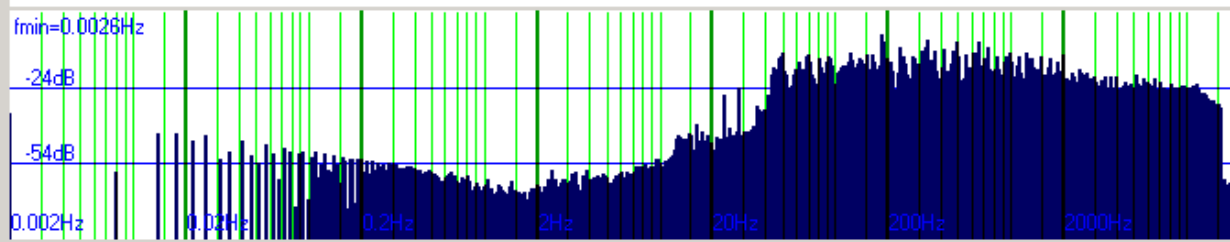
0<x<=3%
3<x<=6%
6<x<=12%
12<x<=25%
25<x<=50%
50<x<=70%
70<x<=85%
85<x<=100%
Max=32767

16/44,100 Stereo 11,196,108 campioni pari a 4.14 min.
FFT: 2^24 con padding di 5581108 campioni.
MediaSX=-428.33 MediaDX=-257.79
pk__left=90.99% (29815) pk_right=100.00% (32767)
SX Supera il 70% per 646 volte: pari a 14.6 milli sec
DX Supera il 70% per 5462 volte: pari a 123.9 milli sec
Slew_Rate minimo per ampli da 100 Watt/8ohm = 1.4 V/us
RMS_sx = 2.94 Vrms (100 Watt)
RMS_dx = 3.64 Vrms (100 Watt)

Salvataggio BMP in corso....

Avanti...

☐ Salta ASDA



24 Tutto

☒ Rosa ☒ canale SX

☐ DX-SX

☒ x Musica

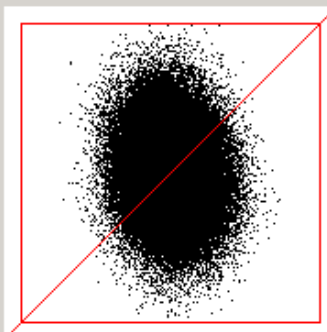
☐ sen2

90 dB

x 1

c:\musica.cd\vienna_05.wav

File Opzioni Fai_Tutto Volume Progs Play ?



CF_Left=8.62
CF_Right=8.18

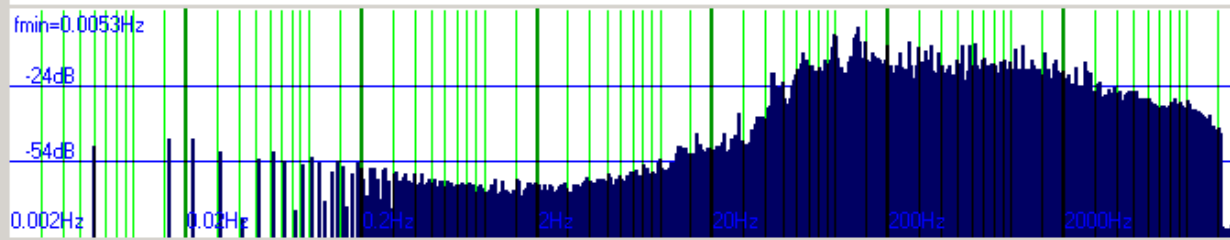
3,271,281
2,630,910
1,796,958
1,654,343
1,573,861
1,708,617
816,744
1,159,623
136,200
406,979
2,481
32,689
23
3,663
0 n.max=1
724 n.max=1

0<x<=3%
3<x<=6%
6<x<=12%
12<x<=25%
25<x<=50%
50<x<=70%
70<x<=85%
85<x<=100%
Max=32755

16/44,100 Stereo 7,597,548 campioni pari a 2.52 min.
FFT: 2^23 con padding di 791060 campioni.
MediaSX=-296.97 MediaDX=-157.71
pk_left=73.93% (24227) pk_right=99.96% (32755)
SX Supera il 70% per 23 volte: pari a 0.5 milli sec
DX Supera il 70% per 4387 volte: pari a 99.5 milli sec
Slew_Rate minimo per ampli da 100 Watt/8ohm = 1.0 V/us
RMS sx = 4.64 Vrms (100 Watt)
RMS dx = 4.89 Vrms (100 Watt)

Salvataggio BMP in corso....

Avanti...

☐ Salta ASDA

23 Tutto

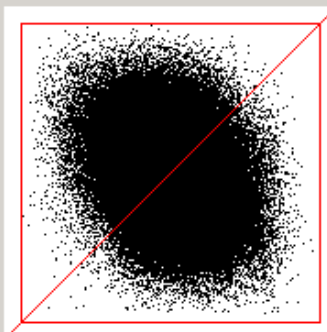
☒ Rosa ☒ canale SX☐ DX-SX☒ x Musica☐ sen2

90 dB

x 1

c:\musica.cd\vienna_06.wav

File Opzioni Fai_Tutto Volume Progs Play ?



CF_Left=13.00
CF_Right=11.05

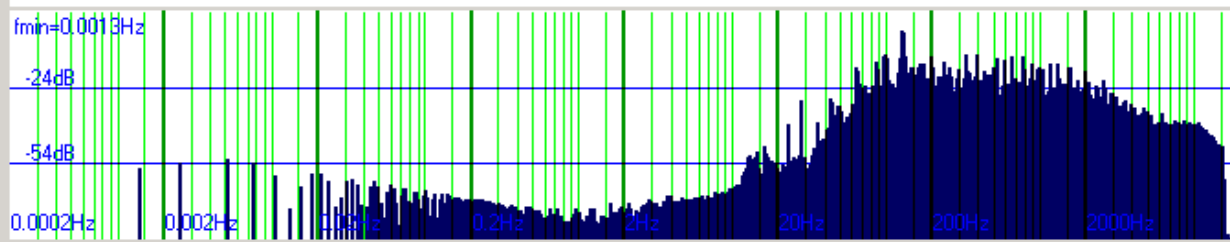
19,235,763
17,417,270
5,353,451
5,514,904
3,566,467
4,227,775
1,756,526
2,421,262
518,902
810,091
48,006
81,463
4,712
10,161
445 n.max=1
1,346 n.max=1

0<x<=3%
3<x<=6%
6<x<=12%
12<x<=25%
25<x<=50%
50<x<=70%
70<x<=85%
85<x<=100%
Max=32764

16/44,100 Stereo 30,484,272 campioni pari a 11.31 min.
FFT: 2^25 con padding di 3070160 campioni.
MediaSX=-229.57 MediaDX=-90.90
pk__left=98.11% (32150) pk_right=99.99% (32764)
SX Supera il 70% per 5157 volte: pari a 116.9 milli sec
DX Supera il 70% per 11507 volte: pari a 260.9 milli sec
Slew_Rate minimo per ampli da 100 Watt/8ohm = 0.6 V/us
RMS sx = 3.08 Vrms (100 Watt)
RMS dx = 3.62 Vrms (100 Watt)

Salvataggio BMP in corso....

Avanti...

☐ Salta ASDA

25 Tutto



Rosa



canale SX



DX-SX



x Musica



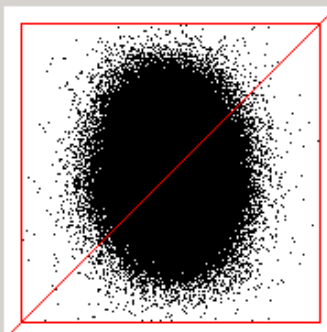
sen2

90 dB

x 1

c:\musica.cd\vienna_07.wav

File Opzioni Fai_Tutto Volume Progs Play ?



CF_Left=13.21

CF_Right=9.46

17,564,103

16,333,936

2,633,882

2,810,586

2,449,104

2,338,763

1,876,537

2,268,931

496,562

1,162,718

15,378

110,105

730

9,962

156 n.max=2

1,451 n.max=8

0<x<=3%

3<x<=6%

6<x<=12%

12<x<=25%

25<x<=50%

50<x<=70%

70<x<=85%

85<x<=100%

Max=32767

16/44,100 Stereo 25,036,452 campioni pari a 9.28 min.

FFT: 2^25 con padding di 8517980 campioni.

MediaSX=-93.73 MediaDX=48.67

pk__left=100.00% (32767) pk__right=100.00% (32767)

SX Supera il 70% per 886 volte: pari a 20.1 milli sec

DX Supera il 70% per 11413 volte: pari a 258.8 milli sec

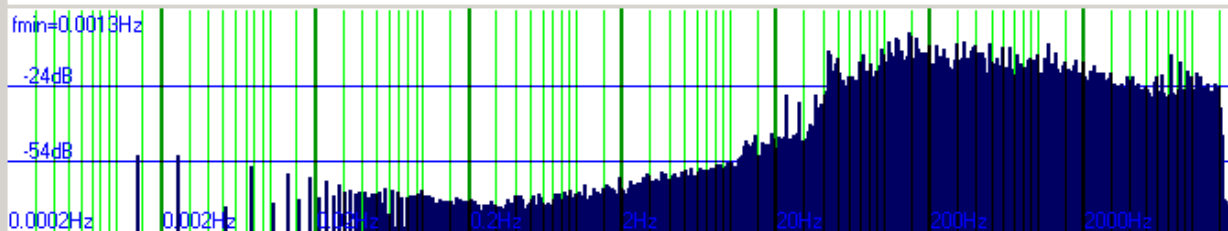
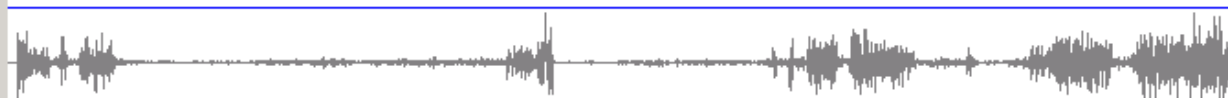
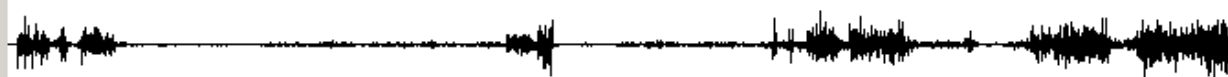
Slew_Rate minimo per ampli da 100 W/att/8ohm = 1.2 V/us

RMS sx = 3.03 Vrms (100 W/att)

RMS dx = 4.23 Vrms (100 W/att)

Salvataggio BMP in corso....

Avanti...

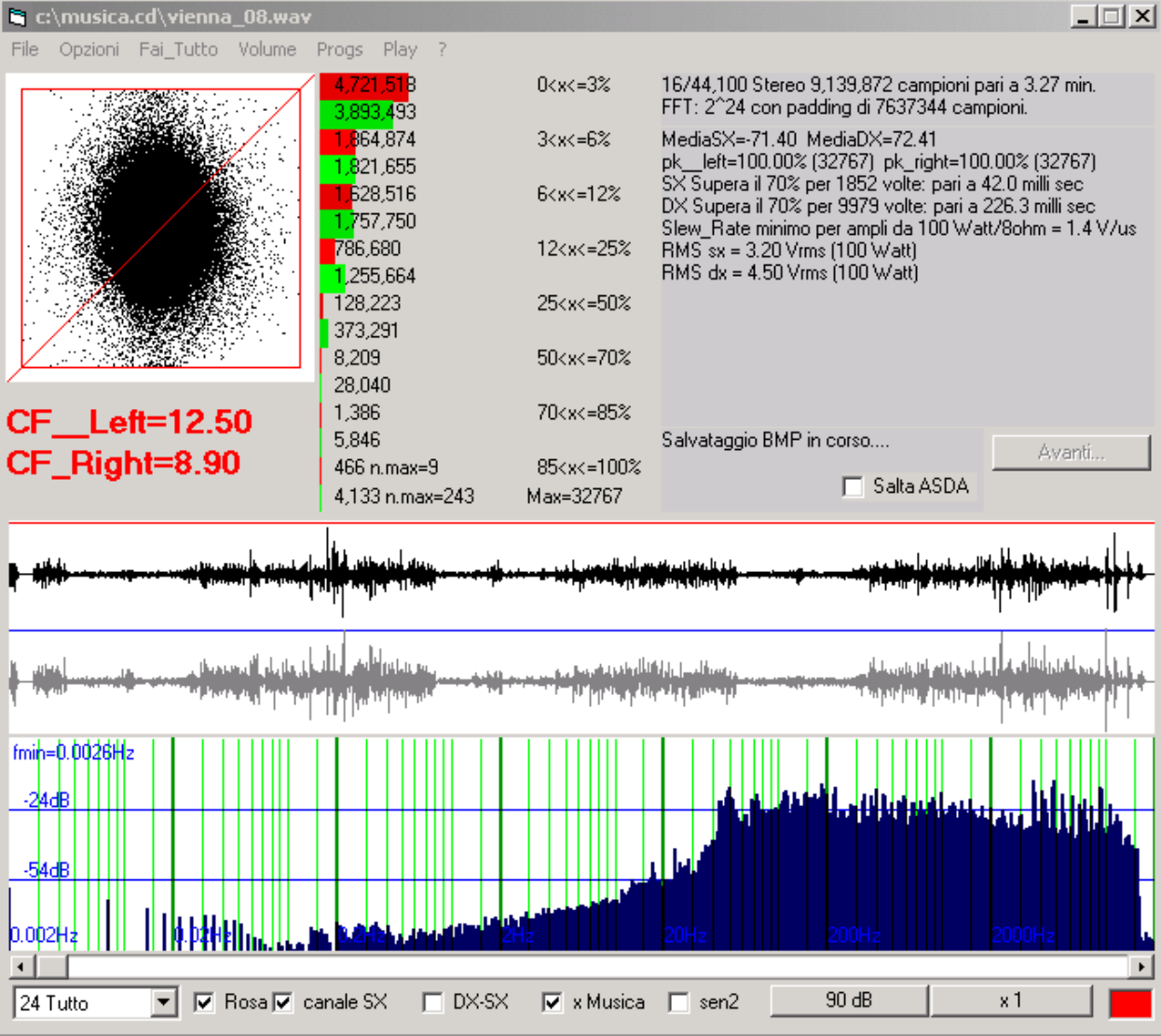
☐ Salta ASDA

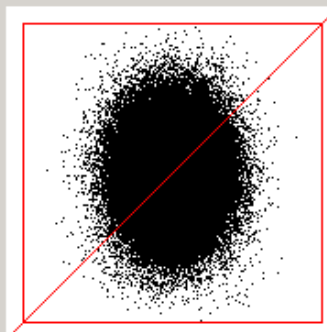
25 Tutto

☒ Rosa ☒ canale SX☐ DX-SX☒ x Musica☐ sen2

90 dB

x 1





CF_Left=12.05
CF_Right=10.29

11,137,070
9,507,350
4,230,566
4,314,538
3,094,478
3,560,014
1,520,587
2,175,555
252,616
641,791
4,706
36,951
112
3,470
1 n.max=1
467 n.max=1

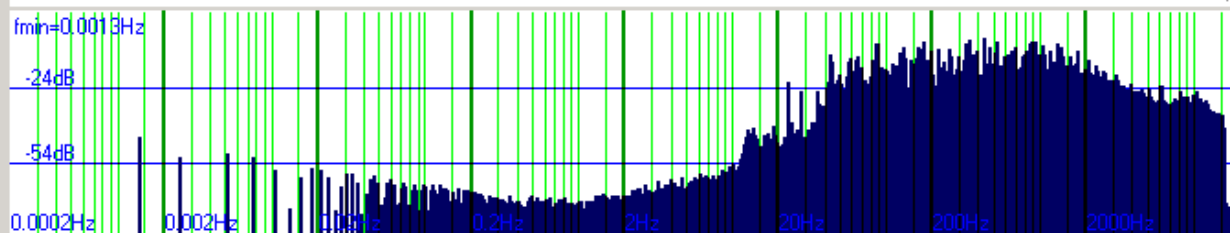
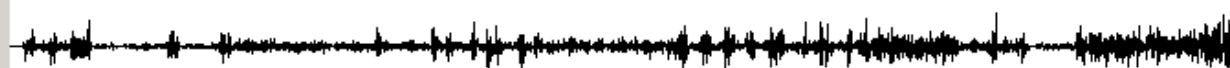
0<x<=3%
3<x<=6%
6<x<=12%
12<x<=25%
25<x<=50%
50<x<=70%
70<x<=85%
85<x<=100%
Max=32718

16/44,100 Stereo 20,240,136 campioni pari a 7.39 min.
FFT: 2^25 con padding di 13314296 campioni.
MediaSX=-145.34 MediaDX=209.29
pk__left=87.71% (28740) pk_right=99.85% (32718)
SX Supera il 70% per 113 volte: pari a 2.6 milli sec
DX Supera il 70% per 3937 volte: pari a 89.3 milli sec
Slew_Rate minimo per ampli da 100 Watt/8ohm = 1.0 V/us
RMS sx = 3.32 Vrms (100 Watt)
RMS dx = 3.89 Vrms (100 Watt)

Salvataggio BMP in corso....

Avanti...

☐ Salta ASDA



25 Tutto

☒ Rosa ☒ canale SX

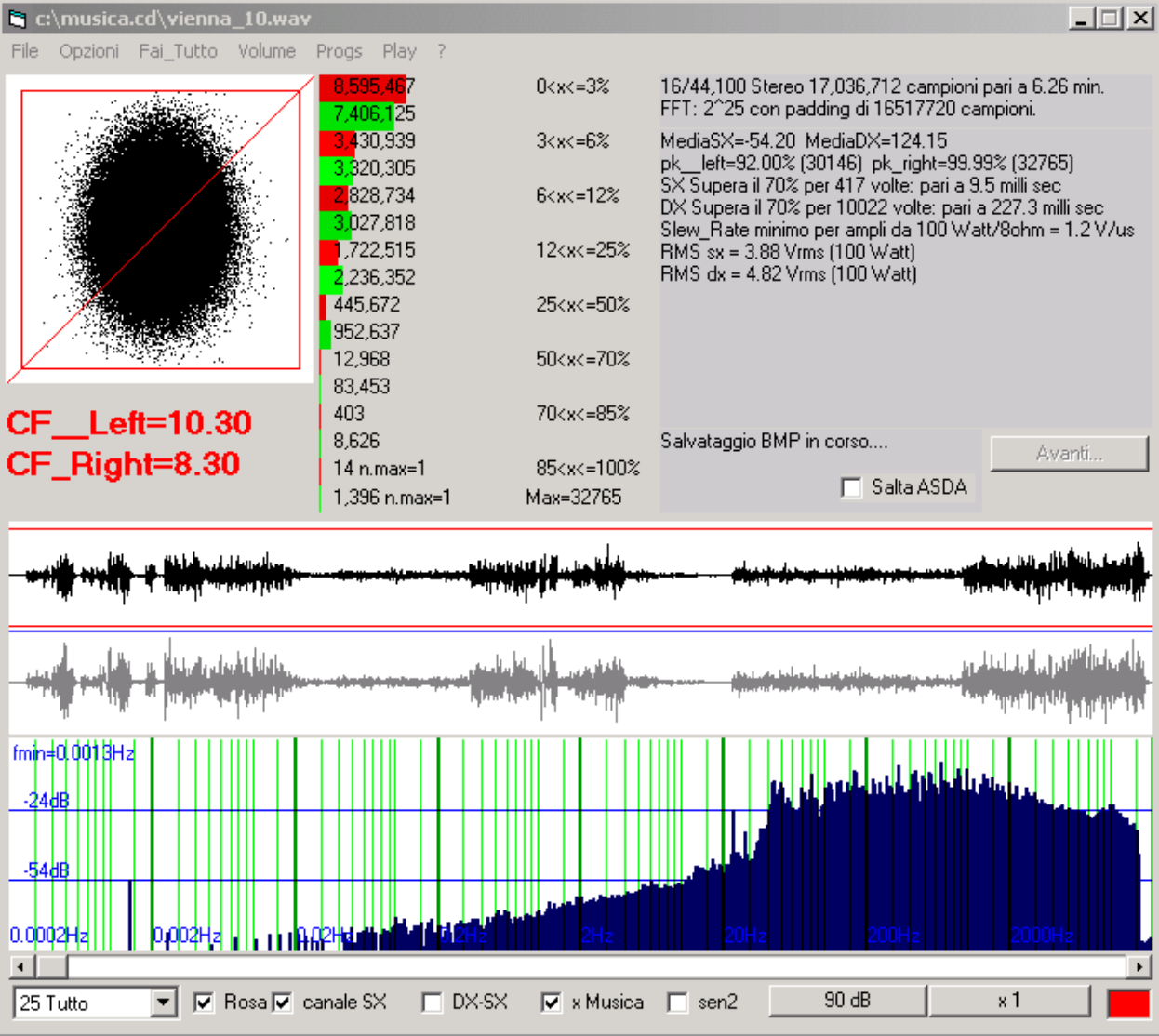
☐ DX-SX

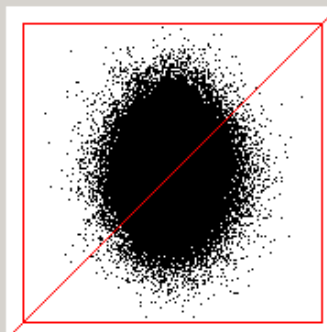
☒ x Musica

☐ sen2

90 dB

x 1





CF_Left=11.95
CF_Right=8.69

3,774,439
3,053,416
1,760,148
1,726,090
1,429,181
1,591,580
755,063
1,085,903
146,549
383,662
4,193
26,544
190
2,336
29 n.max=1
261 n.max=3

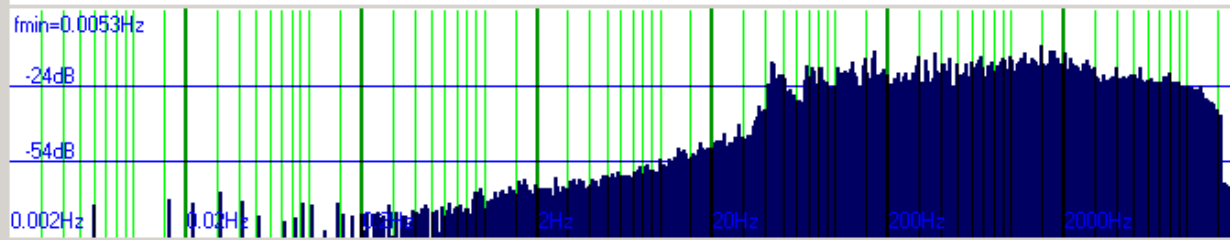
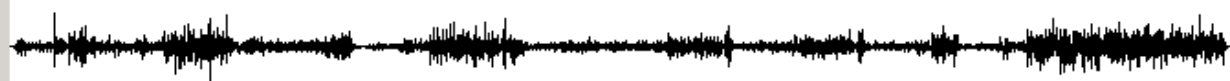
0<x<=3%
3<x<=6%
6<x<=12%
12<x<=25%
25<x<=50%
50<x<=70%
70<x<=85%
85<x<=100%
Max=32767

16/44,100 Stereo 7,869,792 campioni pari a 2.58 min.
FFT: 2^23 con padding di 518816 campioni.
MediaSX=-34.39 MediaDX=115.66
pk_left=99.99% (32764) pk_right=100.00% (32767)
SX Supera il 70% per 219 volte: pari a 5.0 milli sec
DX Supera il 70% per 2597 volte: pari a 58.9 milli sec
Slew_Rate minimo per ampli da 100 Watt/8ohm = 1.9 V/us
RMS sx = 3.35 Vrms (100 Watt)
RMS dx = 4.61 Vrms (100 Watt)

Salvataggio BMP in corso....

Avanti...

☐ Salta ASDA



23 Tutto

☒ Rosa ☒ canale SX

☐ DX-SX

☒ x Musica

☐ sen2

90 dB

x 1