

**Fattore di Cresta del segnale musicale**  
**Alice Pelle : Little Dream**

15 dicembre 2008

Alice Pelle "Little Dream" ricondizionato (SUONO Record Production, curato da Paolo Perilli) del 2007. Le tracce sono state rippate e "ricondizionate2 tagliando con filtri digitali ogni frequenza sotto 20 Hz e sopra 19kHz. Quello che appare sotto i 20 Hz è rumore di quantizzazione.

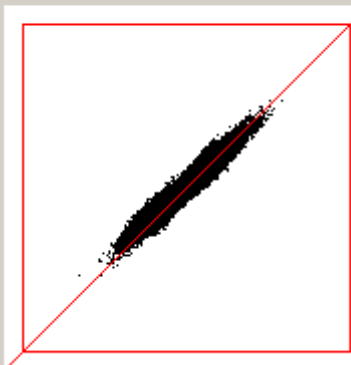
Traccia    Max        CF    Slew rate

Originale

Pelle_01.wav	20790	9.93	0.37
Pelle_02.wav	32767	5.80	1.47 <- cf min
Pelle_03.wav	31683	12.29	0.87 <- cf max
Pelle_04.wav	27681	11.70	0.33
Pelle_05.wav	31726	10.67	0.77
Pelle_06.wav	25887	10.97	0.68
Pelle_07.wav	32767	9.20	2.06
Pelle_08.wav	29804	9.64	0.81
Pelle_09.wav	32223	10.86	0.95

Ricondizionato

Pelle_ric_01	22771	10.88	0.37
Pelle_ric_02	32767	6.06	3.53 <- cf min
Pelle_ric_03	32674	12.97	3.49
Pelle_ric_04	30627	12.99	0.33 <- cf max
Pelle_ric_05	32587	10.96	3.46
Pelle_ric_06	29906	12.68	0.68
Pelle_ric_07	32757	9.58	3.52
Pelle_ric_08	32006	10.17	0.77
Pelle_ric_09	32759	11.03	3.51



**CF\_Left=10.88**  
**CF\_Right=9.57**

6,182,978  
6,143,839  
3,399,481  
3,461,961  
3,062,429  
3,125,125  
1,581,743  
1,593,813  
384,893  
289,839  
8,317  
5,383  
186  
72  
5 n.max=1  
0 n.max=1

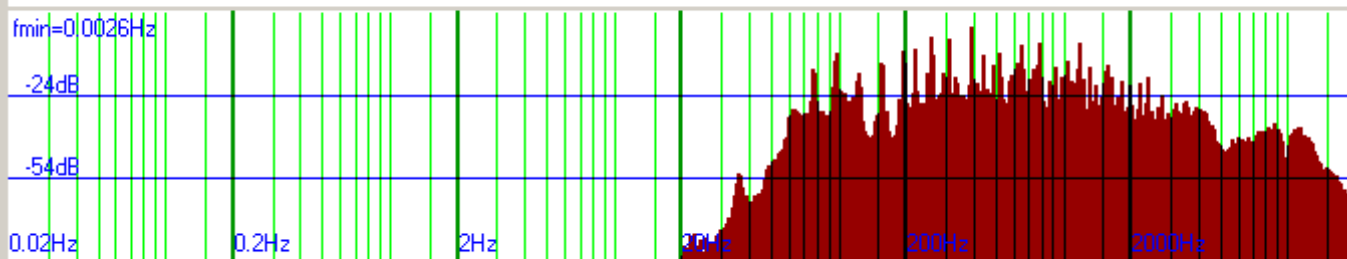
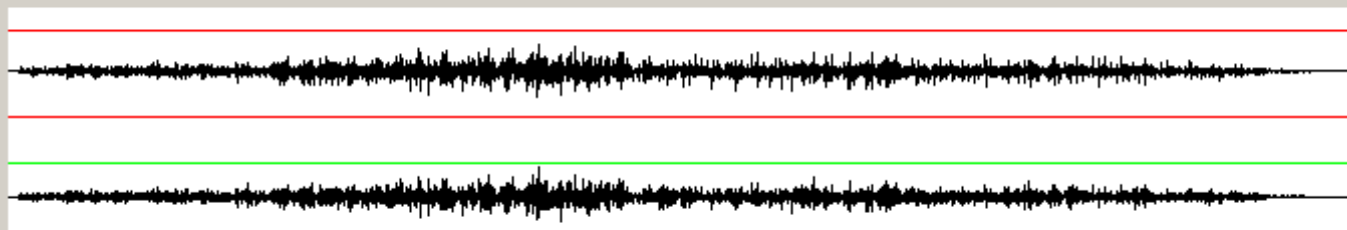
0<x<=3%  
3<x<=6%  
6<x<=12%  
12<x<=25%  
25<x<=50%  
50<x<=70%  
70<x<=85%  
85<x<=100%  
Max=22771

16/44,100 Stereo 14,620,033 campioni pari a 5.32 min.  
FFT: 2^24 con padding di 2157183 campioni.  
MediaSX=0.00 MediaDX=0.00  
pk\_left=69.49% (22771) pk\_right=58.22% (19076)  
SX Supera il 70% per 191 volte: pari a 4.3 milli sec  
DX Supera il 70% per 72 volte: pari a 1.6 milli sec  
Slew\_Rate minimo per ampli da 100 Watt/8ohm = 0.4 V/us  
RMS\_dx = 3.68 Vrms (100 Watt)  
RMS\_sx = 4.18 Vrms (100 Watt)

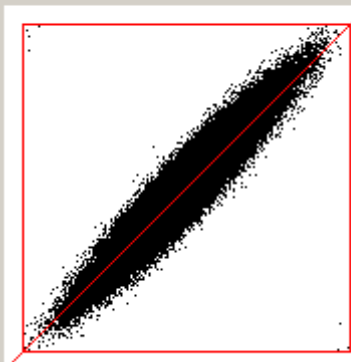
Salvataggio BMP in corso....

Avanti...

Salta ASDA



24 Tutto  Rosa  canale SX  DX-SX  x Musica  sen2 90 dB x 1



**CF\_Left=6.06**  
**CF\_Right=5.63**

- 1,741,707
- 1,602,325
- 1,290,712
- 1,191,348
- 2,015,280
- 1,952,543
- 2,100,274
- 2,199,245
- 932,712
- 1,106,814
- 70,744
- 95,460
- 6,273
- 9,210
- 798 n.max=1
- 1,554 n.max=1

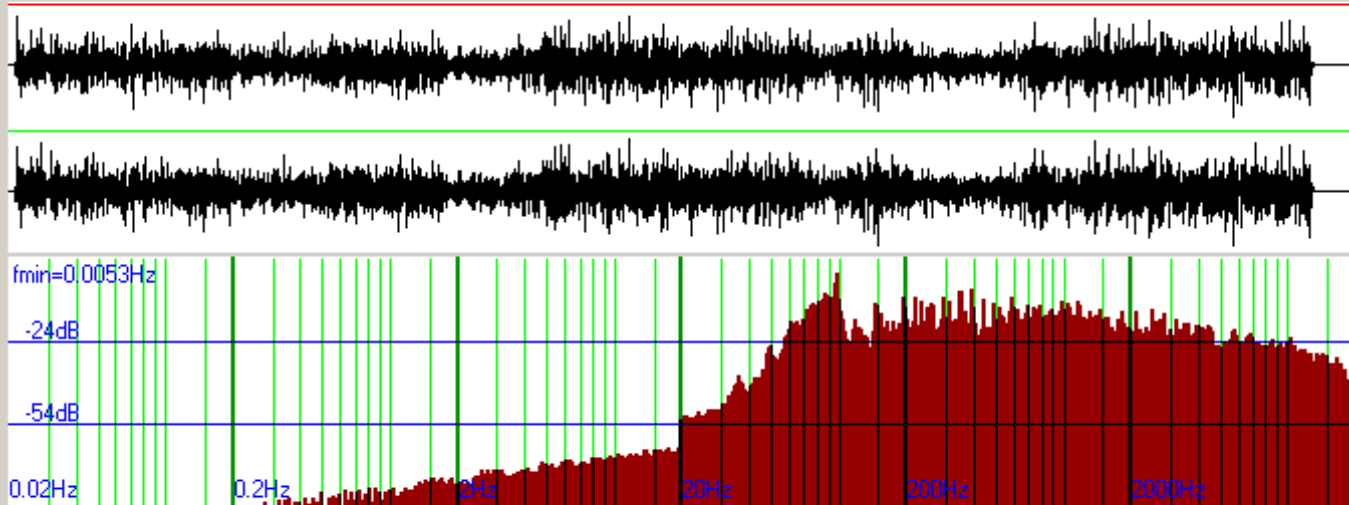
- 0<x<=3%
- 3<x<=6%
- 6<x<=12%
- 12<x<=25%
- 25<x<=50%
- 50<x<=70%
- 70<x<=85%
- 85<x<=100%
- Max=32767

16/44,100 Stereo 8,158,501 campioni pari a 3.05 min.  
FFT: 2^23 con padding di 230107 campioni.  
MediaSX=-0.18 MediaDX=-0.09  
pk\_left=100.00% (32767) pk\_right=100.00% (32767)  
SX Supera il 70% per 7071 volte: pari a 160.3 milli sec  
DX Supera il 70% per 10764 volte: pari a 244.1 milli sec  
Slew\_Rate minimo per ampli da 100 Watt/8ohm = 3.5 V/us  
RMS\_dx = 6.60 Vrms (100 Watt)  
RMS\_sx = 7.11 Vrms (100 Watt)

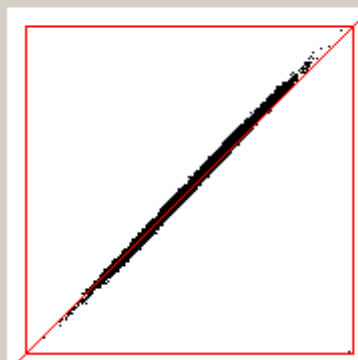
Salvataggio BMP in corso....

Avanti...

Salta ASDA



23 Tutto  Rosa  canale SX  DX-SX  x Musica  sen2 90 dB x 1



CF\_Left=12.97  
CF\_Right=12.68

- 8,609,152
- 8,393,822
- 3,055,963
- 3,115,458
- 2,119,717
- 2,196,345
- 1,065,885
- 1,113,378
- 259,359
- 288,072
- 8,244
- 11,069
- 307
- 465
- 29 n.max=1
- 47 n.max=1

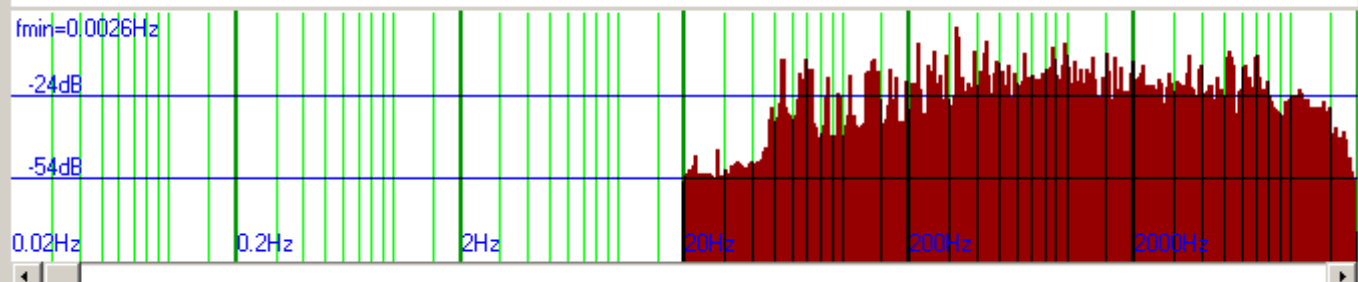
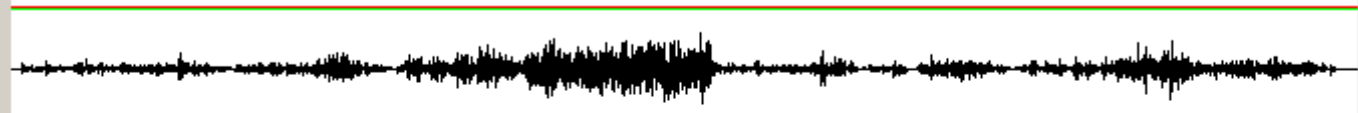
- 0<x<=3%
- 3<x<=6%
- 6<x<=12%
- 12<x<=25%
- 25<x<=50%
- 50<x<=70%
- 70<x<=85%
- 85<x<=100%
- Max=32674

16/44,100 Stereo 15,118,657 campioni pari a 5.43 min.  
FFT: 2^24 con padding di 1658559 campioni.  
MediaSX=0.01 MediaDX=0.02  
pk\_left=98.23% (32187) pk\_right=99.71% (32674)  
SX Supera il 70% per 336 volte: pari a 7.6 milli sec  
DX Supera il 70% per 512 volte: pari a 11.6 milli sec  
Slew\_Rate minimo per ampli da 100 Watt/8ohm = 3.5 V/us  
RMS\_dx = 3.09 Vrms (100 Watt)  
RMS\_sx = 3.15 Vrms (100 Watt)

Salvataggio BMP in corso....

Avanti...

Salta ASDA





**CF\_Left=12.17**  
**CF\_Right=12.99**

- 6,693,863
- 6,656,596
- 2,153,587
- 2,209,111
- 1,667,468
- 1,736,120
- 901,866
- 873,244
- 253,869
- 199,032
- 10,137
- 6,787
- 391
- 280
- 27 n.max=1
- 38 n.max=1

- 0<x<=3%
- 3<x<=6%
- 6<x<=12%
- 12<x<=25%
- 25<x<=50%
- 50<x<=70%
- 70<x<=85%
- 85<x<=100%
- Max=30627

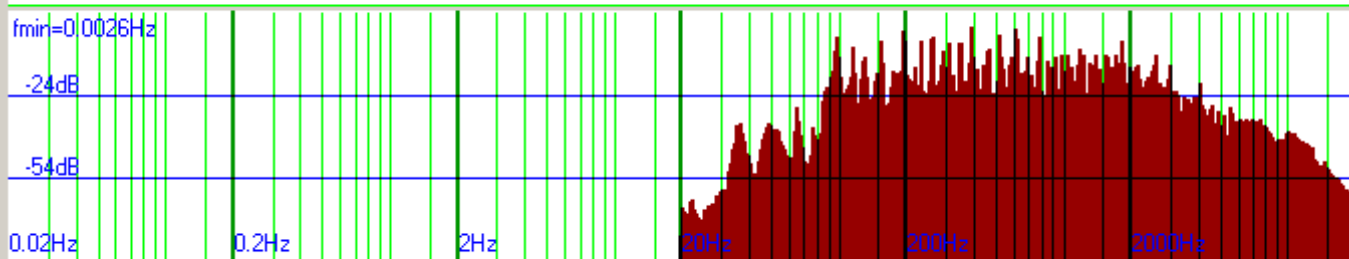
16/44,100 Stereo 11,681,209 campioni pari a 4.25 min.  
FFT: 2<sup>24</sup> con padding di 5096007 campioni.

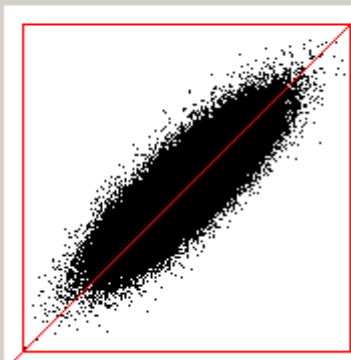
MediaSX=0.00 MediaDX=0.00  
pk\_left=92.57% (30334) pk\_right=93.47% (30627)  
SX Supera il 70% per 418 volte: pari a 9.5 milli sec  
DX Supera il 70% per 318 volte: pari a 7.2 milli sec  
Slew\_Rate minimo per ampli da 100 Watt/8ohm = 0.3 V/us  
RMS\_dx = 3.29 Vrms (100 Watt)  
RMS\_sx = 3.08 Vrms (100 Watt)

Salvataggio BMP in corso....

Avanti...

Salta ASDA





**CF\_Left=10.65**  
**CF\_Right=10.96**

- 9,495,985
- 9,446,242
- 3,153,922
- 3,148,757
- 2,099,099
- 2,181,756
- 1,380,013
- 1,383,040
- 571,366
- 547,004
- 32,141
- 26,236
- 1,744
- 1,300
- 210 n.max=1
- 145 n.max=1

- 0<x<=3%
- 3<x<=6%
- 6<x<=12%
- 12<x<=25%
- 25<x<=50%
- 50<x<=70%
- 70<x<=85%
- 85<x<=100%
- Max=32587

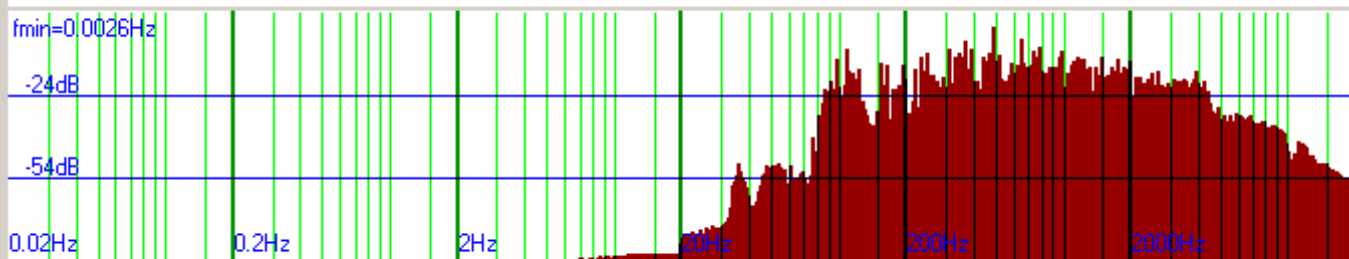
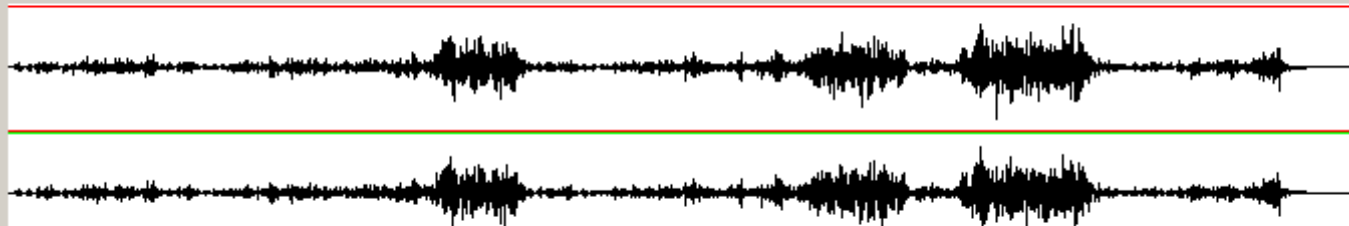
16/44,100 Stereo 16,734,481 campioni pari a 6.19 min.  
FFT: 2<sup>24</sup> con padding di 42735 campioni.

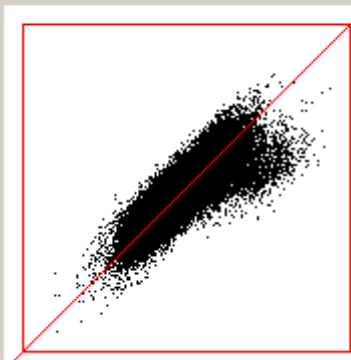
MediaSX=0.01 MediaDX=0.02  
pk\_left=98.42% (32251) pk\_right=99.45% (32587)  
SX Supera il 70% per 1954 volte: pari a 44.3 milli sec  
DX Supera il 70% per 1445 volte: pari a 32.8 milli sec  
Slew\_Rate minimo per ampli da 100 Watt/8ohm = 3.5 V/us  
RMS\_dx = 3.75 Vrms (100 Watt)  
RMS\_sx = 3.65 Vrms (100 Watt)

Salvataggio BMP in corso....

Avanti...

Salta ASDA





**CF\_Left=12.68**  
**CF\_Right=12.27**

- 4,049,342
- 3,870,511
- 1,893,057
- 1,721,985
- 1,507,572
- 1,501,266
- 656,986
- 718,506
- 112,144
- 110,641
- 6,327
- 3,138
- 665
- 138
- 107 n.max=1
- 15 n.max=1

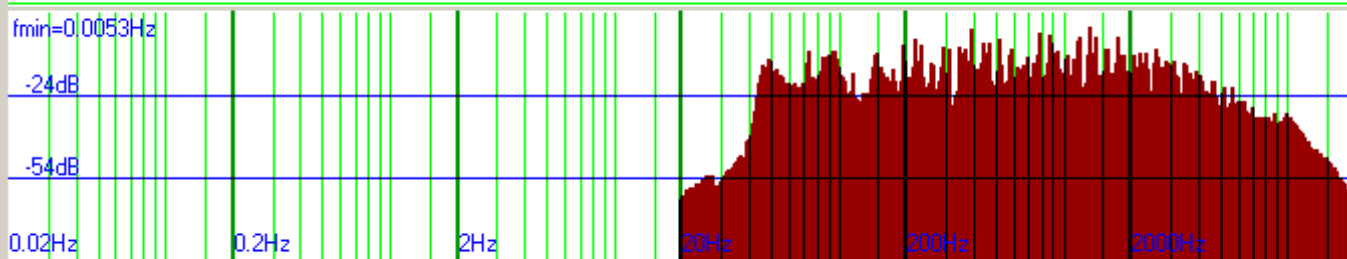
- 0<x<=3%
- 3<x<=6%
- 6<x<=12%
- 12<x<=25%
- 25<x<=50%
- 50<x<=70%
- 70<x<=85%
- 85<x<=100%
- Max=29906

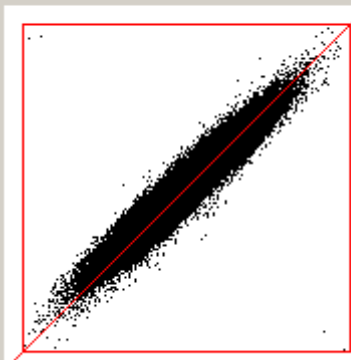
16/44,100 Stereo 8,026,201 campioni pari a 3.02 min.  
FFT: 2<sup>23</sup> con padding di 362407 campioni.  
MediaSX=0.00 MediaDX=0.00  
pk\_left=91.27% (29906) pk\_right=88.79% (29094)  
SX Supera il 70% per 772 volte: pari a 17.5 milli sec  
DX Supera il 70% per 153 volte: pari a 3.5 milli sec  
Slew\_Rate minimo per ampli da 100 Watt/8ohm = 0.7 V/us  
RMS\_dx = 3.15 Vrms (100 Watt)  
RMS\_sx = 3.26 Vrms (100 Watt)

Salvataggio BMP in corso....

Avanti...

Salta ASDA





**CF\_Left=9.20**  
**CF\_Right=9.58**

5,804,769
6,045,922
3,009,703
3,027,330
3,082,427
3,001,379
2,050,235
1,932,949
595,339
543,937
31,200
22,907
1,954
1,282
305 n.max=1
226 n.max=1

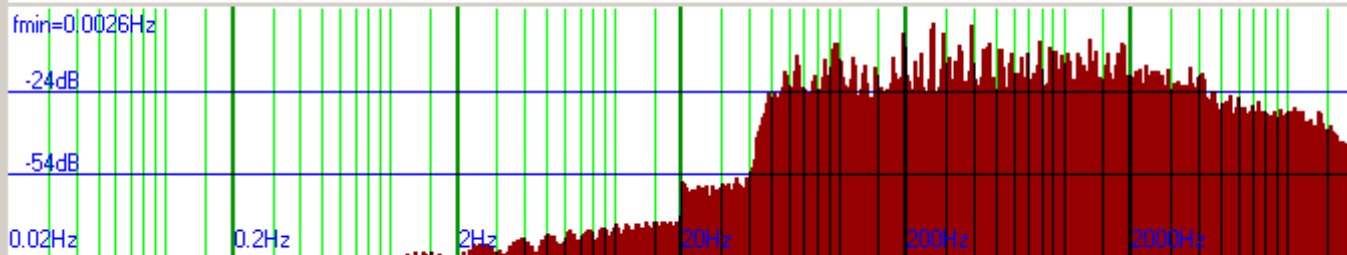
0<x<=3%
3<x<=6%
6<x<=12%
12<x<=25%
25<x<=50%
50<x<=70%
70<x<=85%
85<x<=100%
Max=32757

16/44,100 Stereo 14,575,933 campioni pari a 5.31 min.  
FFT: 2<sup>24</sup> con padding di 2201283 campioni.  
MediaSX=0.09 MediaDX=0.08  
pk\_left=99.97% (32757) pk\_right=99.78% (32697)  
SX Supera il 70% per 2259 volte: pari a 51.2 milli sec  
DX Supera il 70% per 1508 volte: pari a 34.2 milli sec  
Slew\_Rate minimo per ampli da 100 Watt/8ohm = 3.5 V/us  
RMS\_dx = 4.35 Vrms (100 Watt)  
RMS\_sx = 4.18 Vrms (100 Watt)

Salvataggio BMP in corso....

Avanti...

Salta ASDA



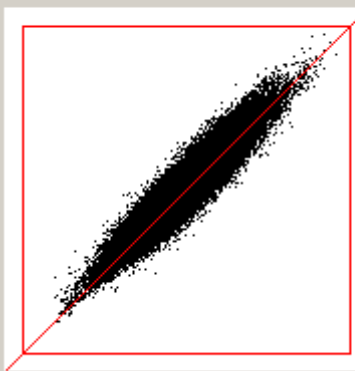
24 Tutto

- Rosa
- canale SX
- DX-SX
- x Musica
- sen2

90 dB

x 1





**CF\_Left=9.93**  
**CF\_Right=10.17**

- 5,155,441
- 5,129,446
- 2,382,862
- 2,342,098
- 2,091,028
- 2,101,622
- 1,240,071
- 1,278,638
- 354,417
- 370,437
- 15,861
- 17,534
- 1,052
- 969
- 64 n.max=1
- 52 n.max=1

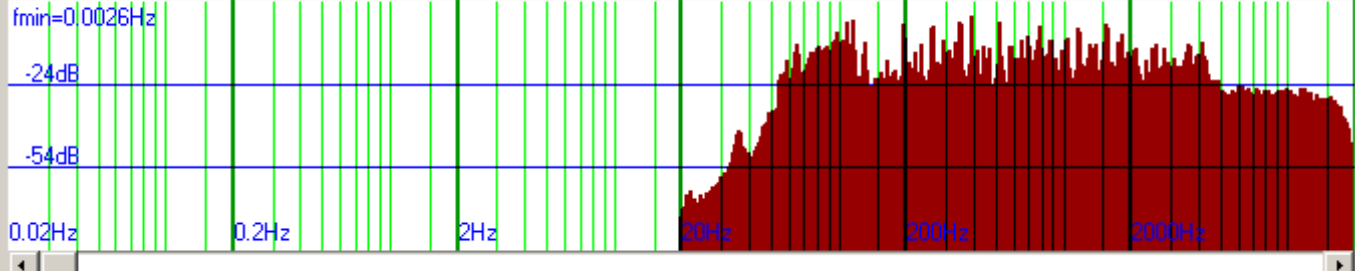
- 0<x<=3%
- 3<x<=6%
- 6<x<=12%
- 12<x<=25%
- 25<x<=50%
- 50<x<=70%
- 70<x<=85%
- 85<x<=100%
- Max=32006

16/44,100 Stereo 11,240,797 campioni pari a 4.15 min.  
FFT: 2<sup>24</sup> con padding di 5536419 campioni.

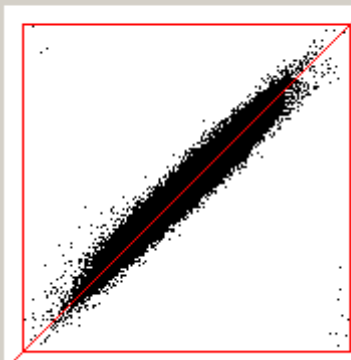
MediaSX=0.00 MediaDX=0.00  
pk\_left=93.72% (30709) pk\_right=97.67% (32006)  
SX Supera il 70% per 1116 volte: pari a 25.3 milli sec  
DX Supera il 70% per 1021 volte: pari a 23.2 milli sec  
Slew\_Rate minimo per ampli da 100 Watt/8ohm = 0.8 V/us  
RMS\_dx = 4.03 Vrms (100 Watt)  
RMS\_sx = 3.93 Vrms (100 Watt)

Salvataggio BMP in corso.... Avanti...

Salta ASDA



24 Tutto  Rosa  canale SX  DX-SX  x Musica  sen2 90 dB x 1



**CF\_Left=11.03**  
**CF\_Right=10.70**

- 8,722,718
- 8,571,637
- 3,001,964
- 2,981,317
- 2,537,148
- 2,583,093
- 1,587,601
- 1,669,110
- 442,417
- 484,573
- 23,288
- 25,481
- 1,539
- 1,564
- 325 n.max=1
- 225 n.max=1

- 0<x<=3%
- 3<x<=6%
- 6<x<=12%
- 12<x<=25%
- 25<x<=50%
- 50<x<=70%
- 70<x<=85%
- 85<x<=100%
- Max=32759

16/44,100 Stereo 16,317,001 campioni pari a 6.10 min.  
FFT: 2^24 con padding di 460215 campioni.  
MediaSX=-0.07 MediaDX=-0.03  
pk\_left=99.87% (32726) pk\_right=99.97% (32759)  
SX Supera il 70% per 1864 volte: pari a 42.3 milli sec  
DX Supera il 70% per 1789 volte: pari a 40.6 milli sec  
Slew\_Rate minimo per ampli da 100 Watt/8ohm = 3.5 V/us  
RMS\_dx = 3.63 Vrms (100 Watt)  
RMS\_sx = 3.74 Vrms (100 Watt)

Salvataggio BMP in corso....

Avanti...

Salta ASDA

