

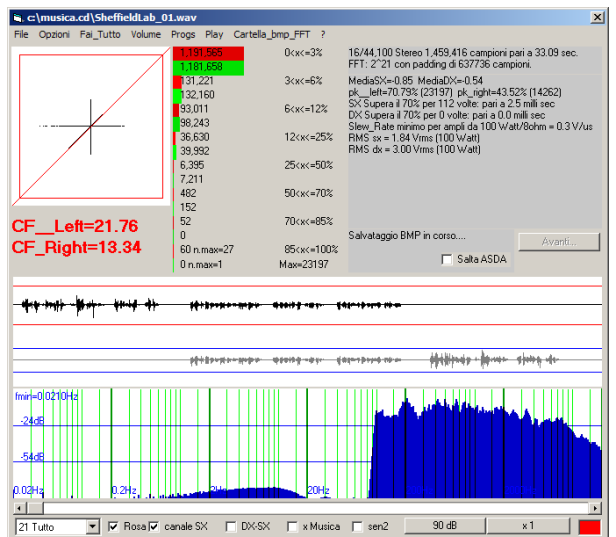
Fattore di Cresta del segnale musicale CD Test: the Sheffield Lab Test CD

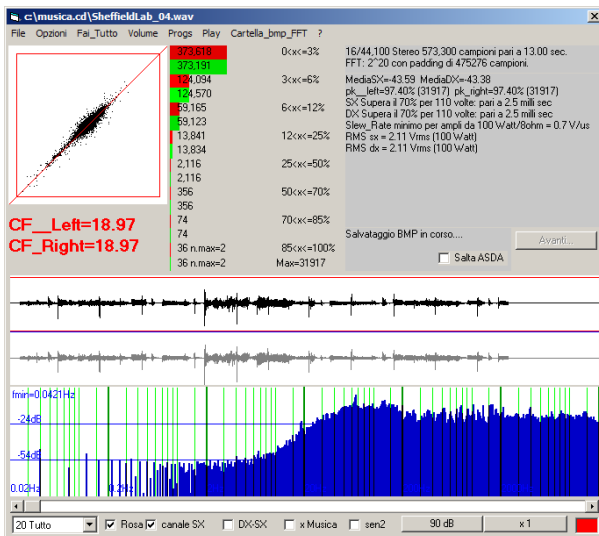
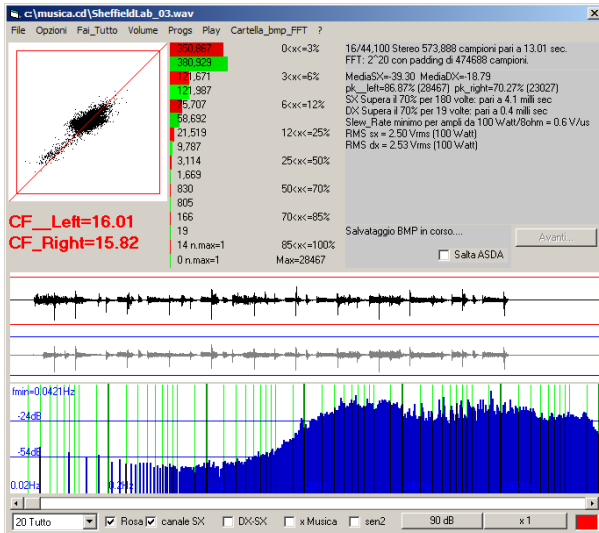
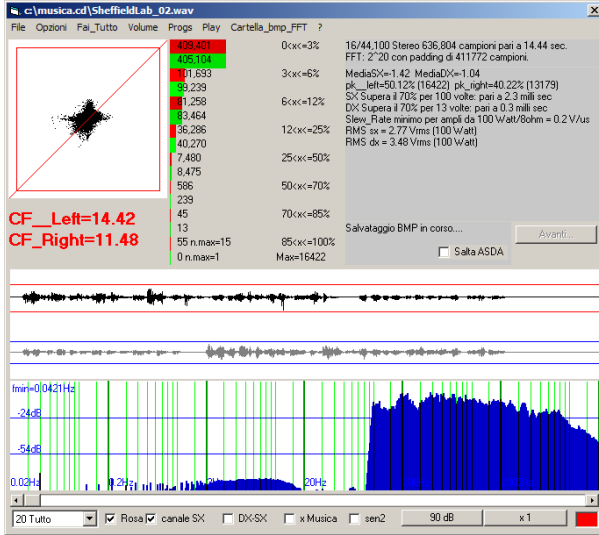
the Sheffield Lab Test CD allegato alla rivista Audiophile Sound 2011 (AUD 104). Le prime 10 tracce sono test di varia natura. La musica comincia con traccia 11

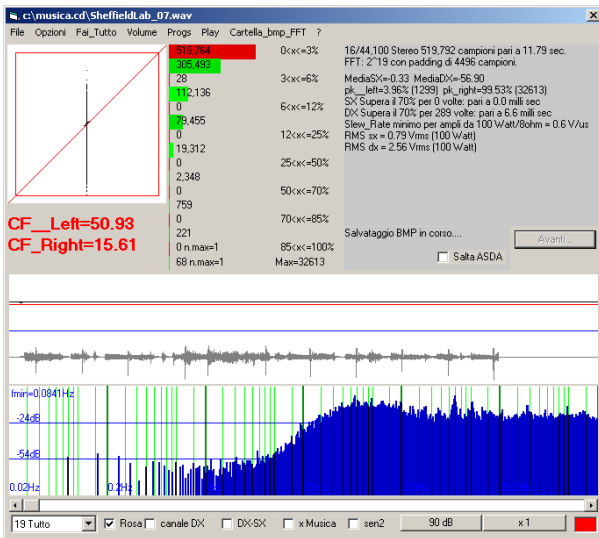
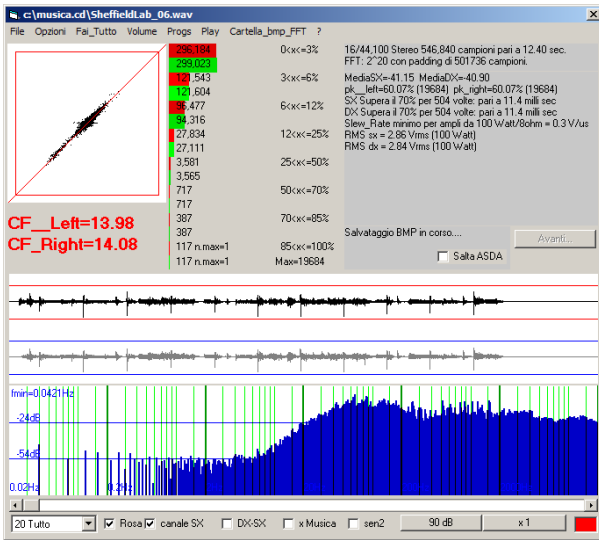
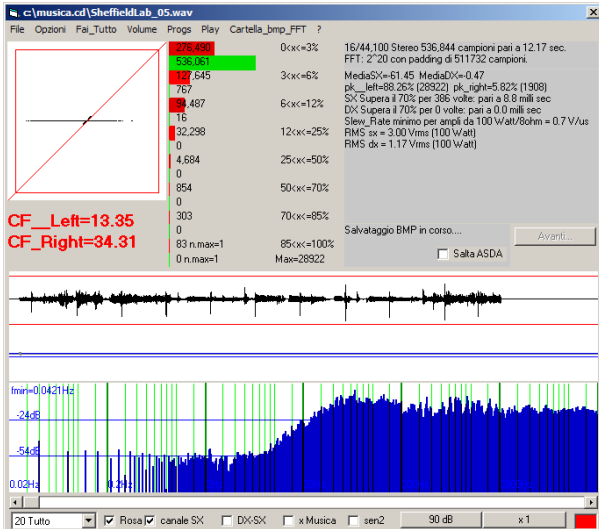
Traccia	Max	CF	SlewRate	
Test				
SheffieldLab_01	23197	21.76	0.33	test: 3 voci dx,sx,centro
SheffieldLab_02	16422	14.42	0.23	test: 3 voci dx,sx,centro contemporaneamente
SheffieldLab_03	28467	16.01	0.65	test: due canali stereo
SheffieldLab_04	31917	18.97	0.70	test: dx+sx in mono
SheffieldLab_05	28922	34.31	0.72	test: segnale mono a sinistra
SheffieldLab_06	19684	14.08	0.31	test: segnale mono al centro
SheffieldLab_07	32613	50.93	0.60	< cf max - test: segnale mono sul canale destro (?)
SheffieldLab_08	31880	21.67	0.71	test: come traccia 3
SheffieldLab_09	00000	0	0.00	test: silenzio
SheffieldLab_10	03775	1.51	0.40	test: warble 20-20k Hz

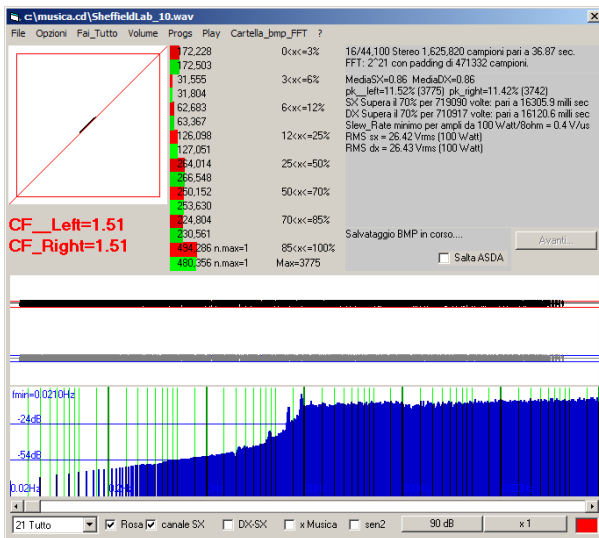
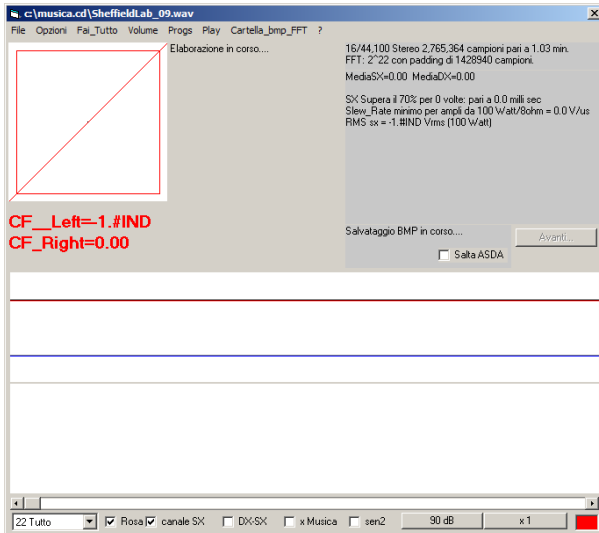
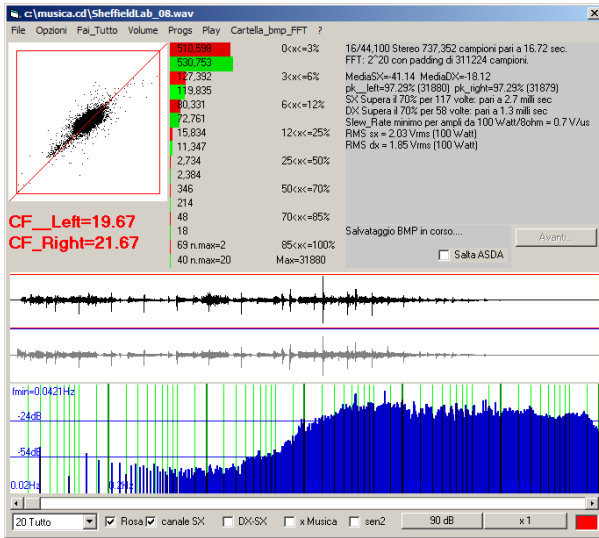
Tracce Musicali

SheffieldLab_11	27060	10.33	1.22	
SheffieldLab_12	32767	12.19	1.20	<<
SheffieldLab_13	18883	14.60	0.35	
SheffieldLab_14	16235	17.66	0.43	
SheffieldLab_15	08925	17.82	0.06	max cf
SheffieldLab_16	27310	13.37	1.07	
SheffieldLab_17	32391	15.62	0.29	
SheffieldLab_18	26664	17.55	0.31	
SheffieldLab_19	24174	8.43	1.24	min cf
SheffieldLab_20	24044	11.35	0.51	
SheffieldLab_21	22023	13.51	0.12	
SheffieldLab_22	19198	13.20	0.09	
SheffieldLab_23	23909	10.63	0.19	
SheffieldLab_24	31489	13.46	0.16	
SheffieldLab_25	31139	14.55	0.46	









Tracce musicali

