

Fattore di Cresta del segnale musicale
Pink Floyd: The Delicate Sound of Thunder

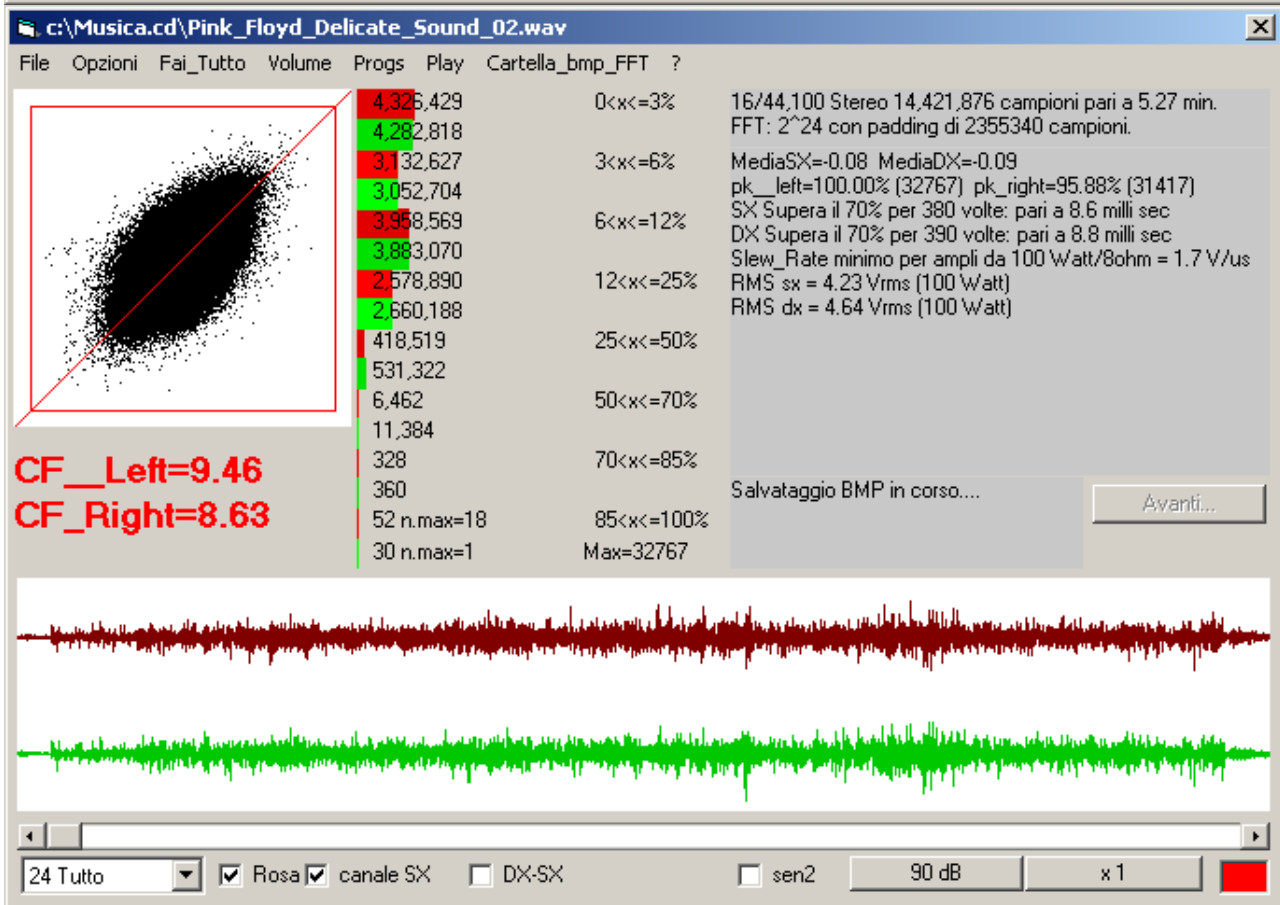
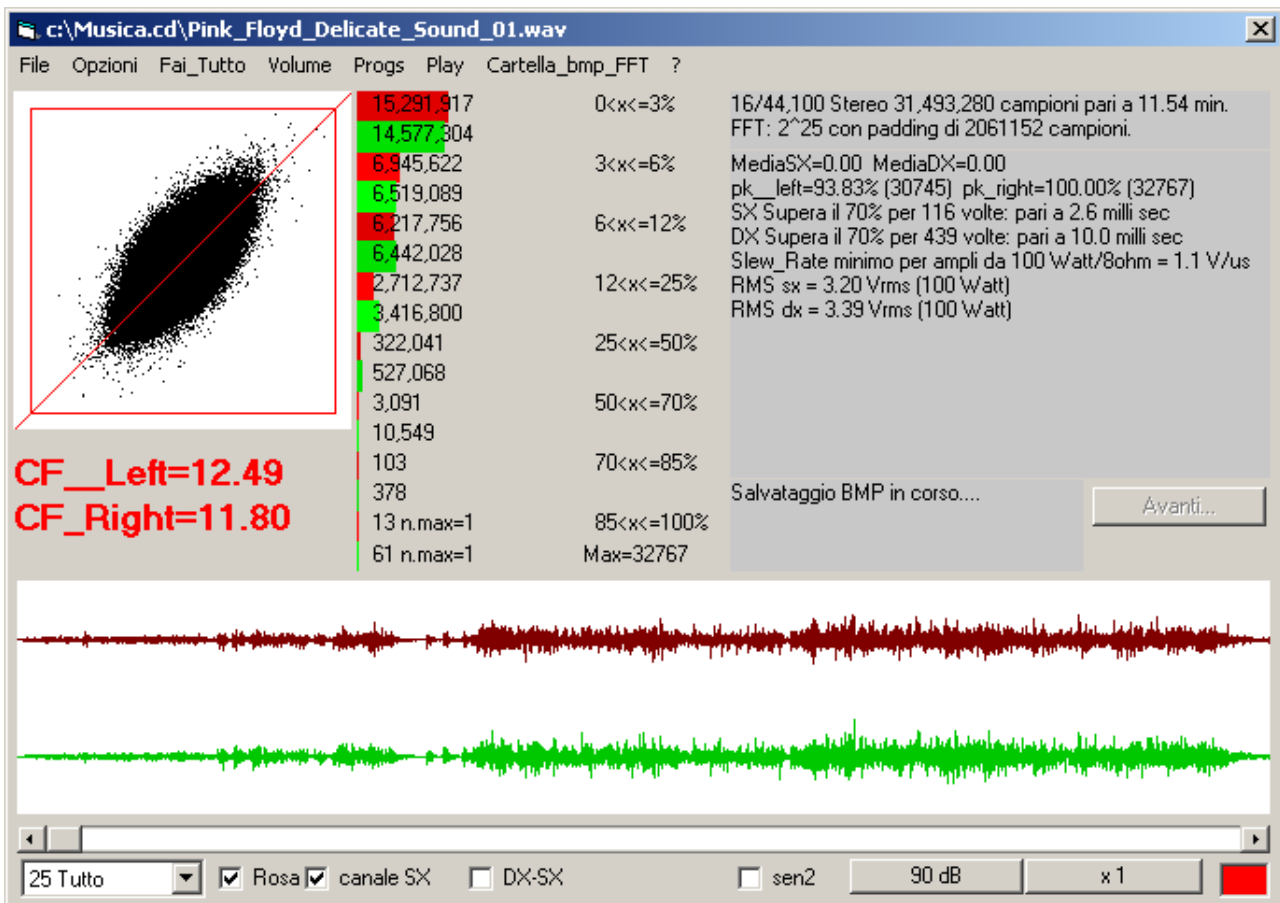
Pink Floyd: The Delicate sound of Thunder (EMI 1988) Qualche sovramodulazione, CF alto (in relazione al genere) anche se non arriva ai valori di The Wall.

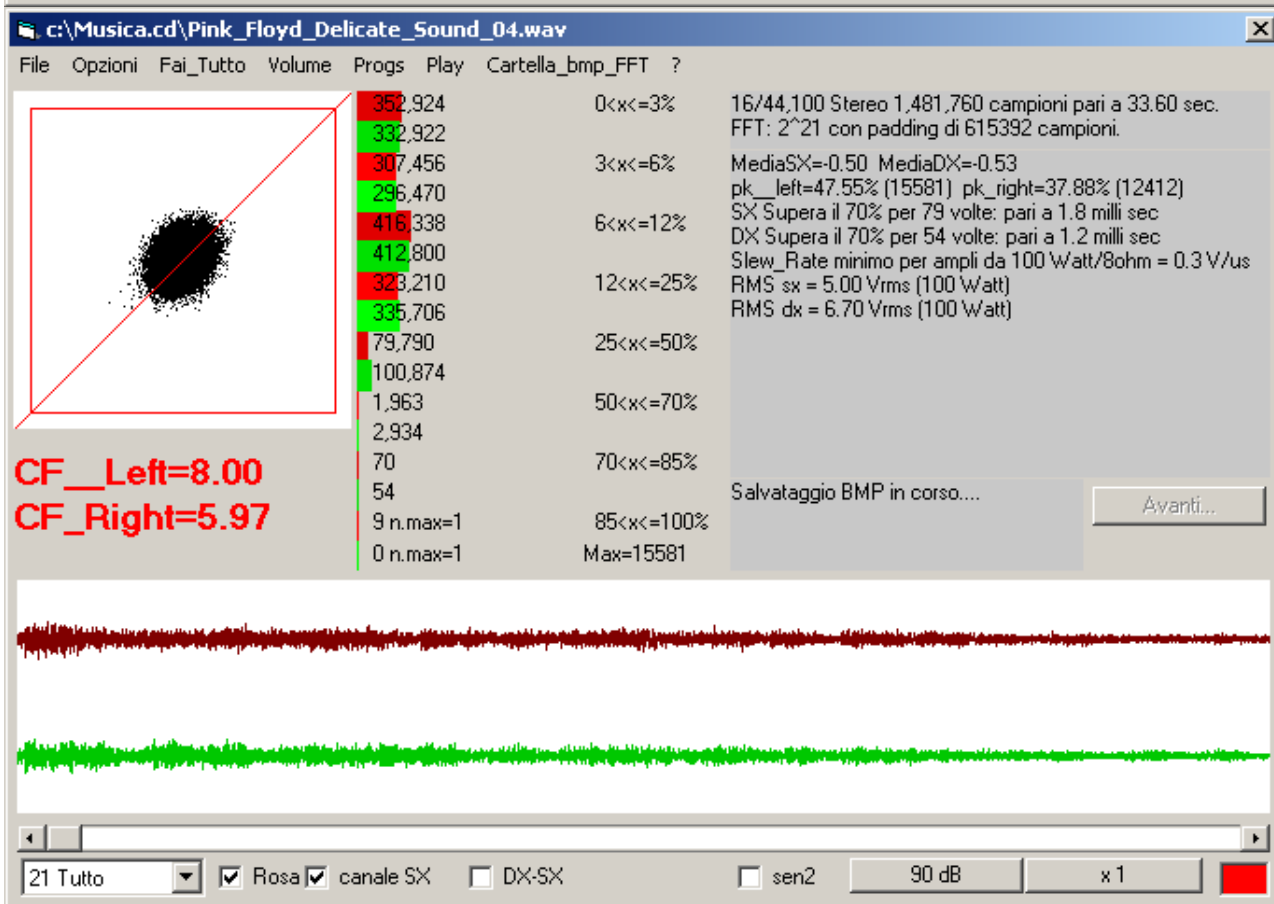
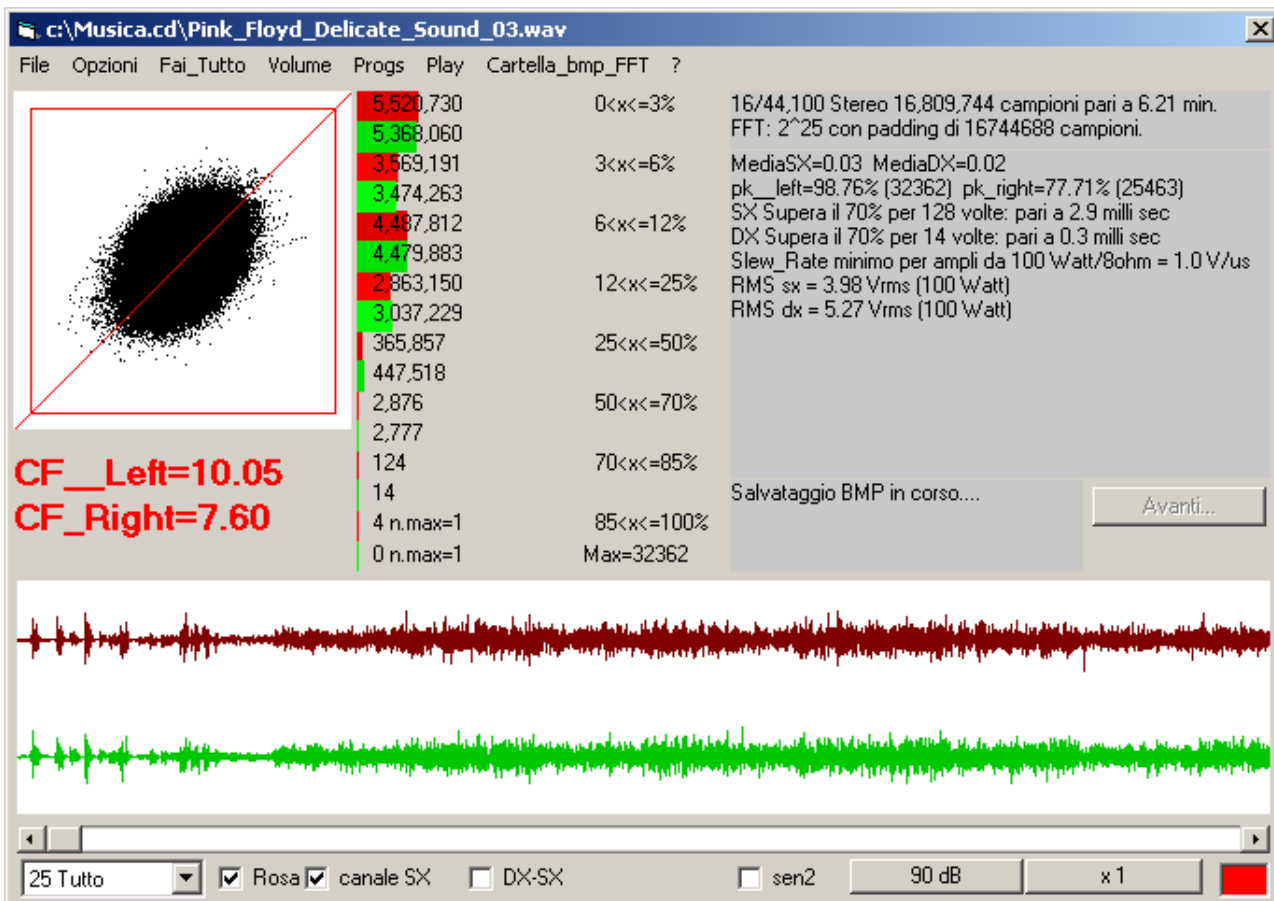
Traccia	Max	CF	SlewRate		
disco 1					
Pink_Floyd_Delicate_Sound_01		32767	12.49	1.14	<< max cf
Pink_Floyd_Delicate_Sound_02		32767	9.46	1.65	<<
Pink_Floyd_Delicate_Sound_03		32362	10.05	1.04	
Pink_Floyd_Delicate_Sound_04		15581	8.00	0.27	
Pink_Floyd_Delicate_Sound_05		32022	7.71	0.73	<- min cf
Pink_Floyd_Delicate_Sound_06		32022	8.03	0.72	
Pink_Floyd_Delicate_Sound_07		32014	10.10	0.88	

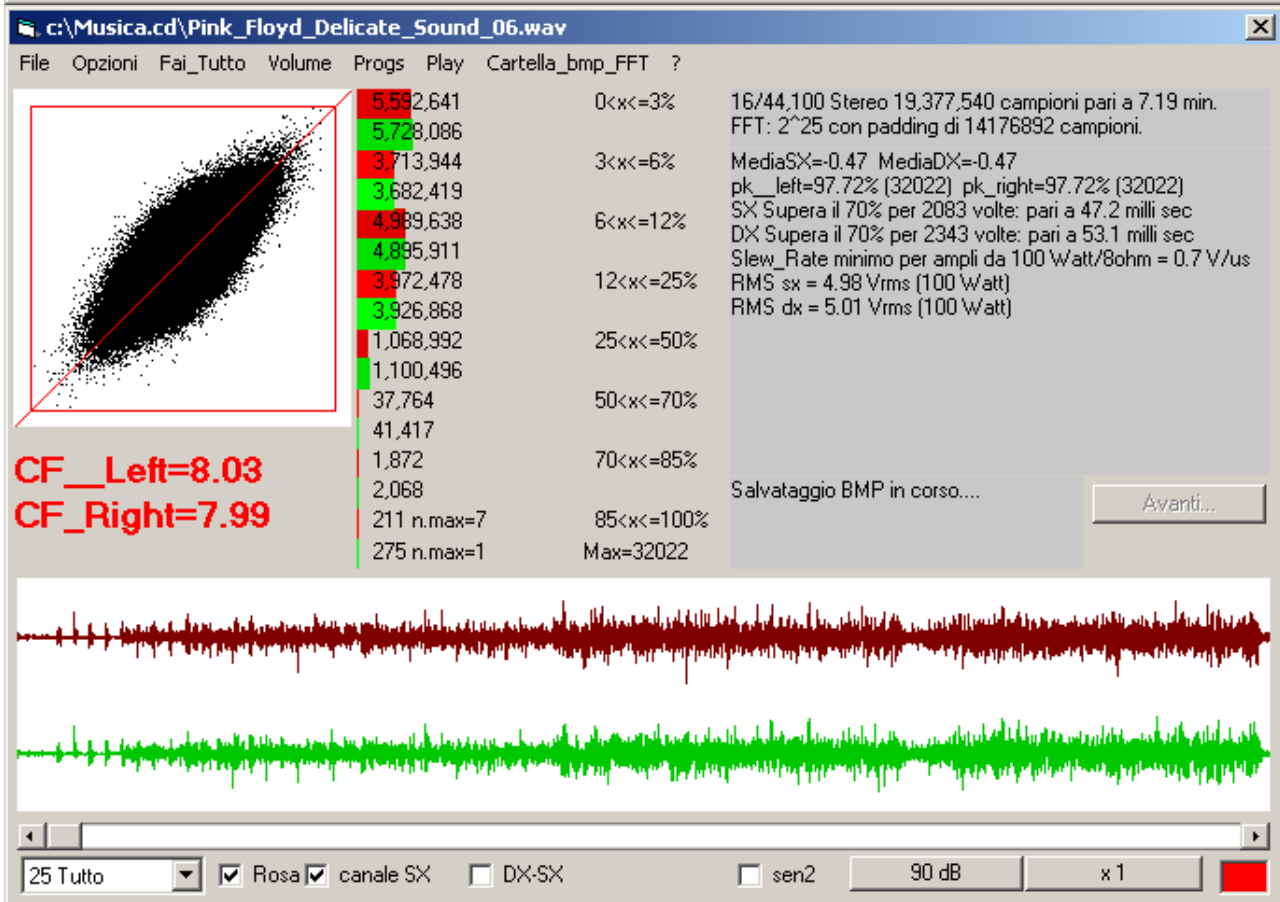
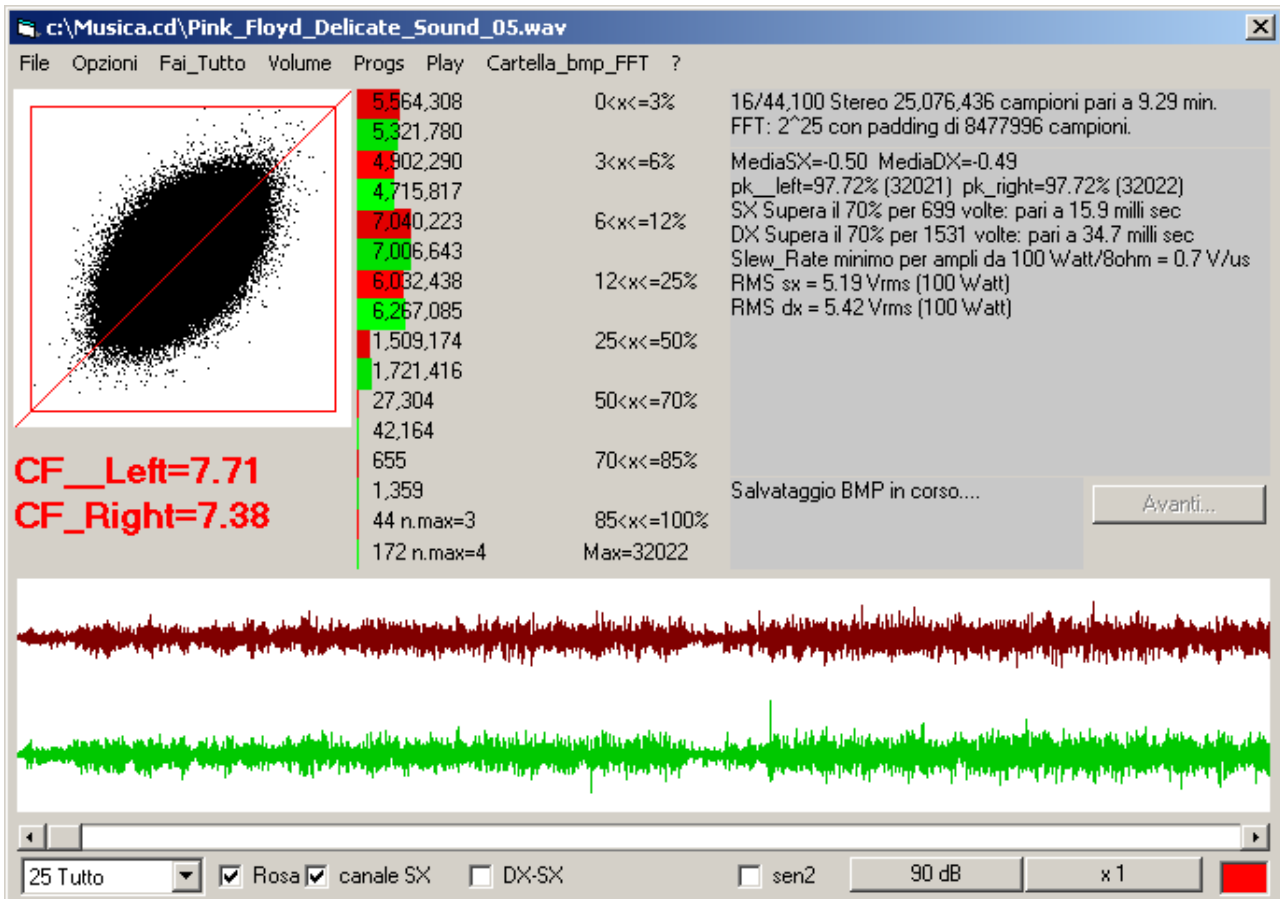
disco 2

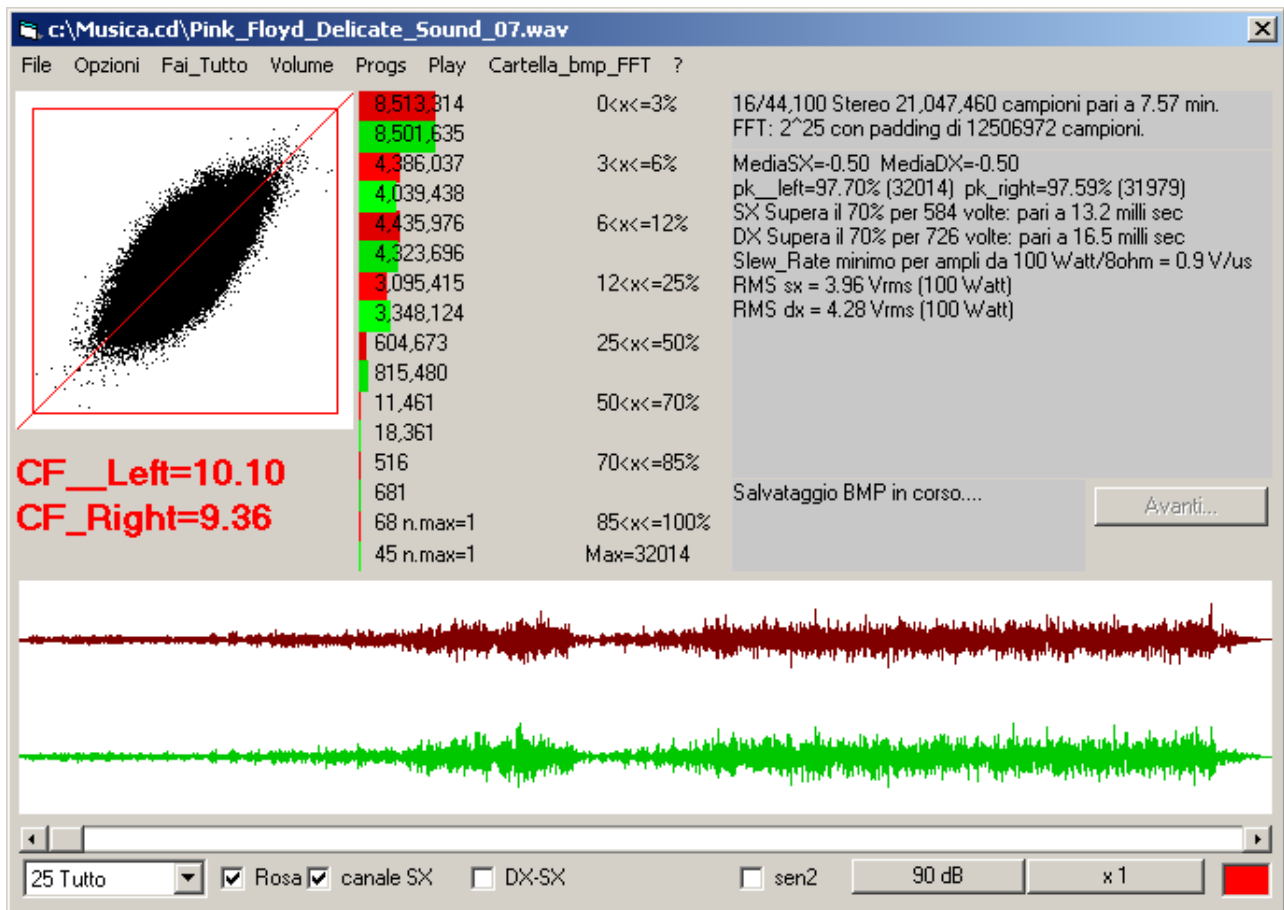
Pink_Floyd_Delicate_Sound_2_01		32767	10.99	1.28	<<
Pink_Floyd_Delicate_Sound_2_02		30426	8.07	0.75	
Pink_Floyd_Delicate_Sound_2_03		32766	11.56	0.98	
Pink_Floyd_Delicate_Sound_2_04		32753	12.17	0.78	
Pink_Floyd_Delicate_Sound_2_05		32705	9.97	0.78	
Pink_Floyd_Delicate_Sound_2_06		32161	10.87	0.76	
Pink_Floyd_Delicate_Sound_2_07		32767	8.67	1.26	<<
Pink_Floyd_Delicate_Sound_2_08		32021	9.86	1.01	

disco 1









disco 2

